

BANGLADESH RESEARCH AND EDUCATION NETWORK

# BdREN'S MONTHLY SERVICE DELIVERY REPORT

February 2024



Prepared by  
BdREN Network Operations Center (NOC)

# CONTENTS

<b>1. COORDINATION ISSUES</b> .....	4
<b>2. LINK AVAILABILITY</b> .....	4
➤ <b>Public Universities:</b> .....	4
➤ <b>Private Universities:</b> .....	5
➤ <b>Medical Colleges and Universities:</b> .....	5
➤ <b>Research Institutes and Others:</b> .....	5
➤ <b>CEDP Colleges:</b> .....	6
<b>3. MAJOR OUTAGE OF January 2024</b> .....	11
<b>4. Traffic Statistics</b> .....	11
➤ <b>Public Universities:</b> .....	11
➤ <b>Private Universities:</b> .....	12
➤ <b>Research Institute, Medical Universities and Others:</b> .....	13
➤ <b>CEDP Colleges:</b> .....	13
<b>5. TOTAL TRAFFIC</b> .....	15
➤ <b>5.1 Top Ten Institutions in Bandwidth Usage:</b> .....	15
<b>6. ONLINE EDUCATION</b> .....	16
<b>6.1 Institution Wise Video Conferencing Usage Statistics</b> .....	16
➤ <b>Public Universities and Colleges:</b> .....	16
➤ <b>Private Universities:</b> .....	17
➤ <b>Medical Colleges:</b> .....	18
➤ <b>Colleges:</b> .....	18
➤ <b>Research Institutes and Others:</b> .....	19
<b>6.2 Institution Wise Video Conferencing Usage Graph</b> .....	21
<b>6.4 BdREN Total Video Conferencing Usage Statistics</b> .....	24
<b>6.5 Top Ten Institutions in Video Conferencing</b> .....	24
<b>6.6 Month-wise Number of Classes, Total Class Hours and Participants</b> .....	25
<b>7. INSTITUTION WISE MAX HPC Allocation</b> .....	25
<b>8. ACRONYMS</b> .....	28

## LIST OF FIGURES

FIGURE 1: INSTITUTION WISE LINK AVAILABILITY CONSIDERING “PLANNED MAINTENANCE” AS NON-OUTAGE	7
FIGURE 2: INSTITUTION WISE LINK AVAILABILITY CONSIDERING “PLANNED MAINTENANCE” AS OUTAGE	9
FIGURE 3: COLLEGE-WISE LINK AVAILABILITY CONSIDERING “PLANNED MAINTENANCE” AS OUTAGE	10
FIGURE 4: PUBLIC UNIVERSITY VIDEO CONFERENCING USAGE GRAPH	18
FIGURE 5: PRIVATE UNIVERSITYS’ VIDEO CONFERENCING USAGE GRAPH	19
FIGURE 6: RESEARCH INSTITUTE AND OTHERS INSTITUTIONS’ VIDEO CONFERENCING USAGE GRAPH	20
FIGURE 7: MEDICAL COLLEGES’ VIDEO CONFERENCING USAGE GRAPH	20
FIGURE 8: COLLEGES’ VIDEO CONFERENCING USAGE GRAPH	21
FIGURE 9: MONTH WISE ZOOM USAGE GRAPH IN LAST ONE YEAR OF 2023	22
FIGURE 10: INSTITUTION WISE MAX HPS ALLOCATION	23

## 1. COORDINATION ISSUES

Processed **650** mail updates between BdREN NOC and member institution.

## 2. LINK AVAILABILITY

### ➤ Public Universities:

Table 1: Institution Wise Link Availability of public universities

Name of Institutes	Outage (In Minute)	Maintenance (Minute)	Availability (W/O Maintenance)	Availability (With Maintenance)
BAU	0	0	100.00%	100.00%
BDU	0	0	100.00%	100.00%
BoU	0	0	100.00%	100.00%
BRUR	0	0	100.00%	100.00%
BSMMU	0	0	100.00%	100.00%
BSMRAAU	0	0	100.00%	100.00%
BSMRAU	0	0	100.00%	100.00%
BSMRSTU	0	0	100.00%	100.00%
BU	0	0	100.00%	100.00%
BUBT	0	0	100.00%	100.00%
BUET	0	0	100.00%	100.00%
<b>BUP</b>	<b>8</b>	<b>8</b>	<b>99.98%</b>	<b>99.98%</b>
BUTex	0	0	100.00%	100.00%
CoU	0	0	100.00%	100.00%
CU	0	0	100.00%	100.00%
CUET	0	0	100.00%	100.00%
CVASU	0	0	100.00%	100.00%
DU	0	0	100.00%	100.00%
DUET	0	0	100.00%	100.00%
HAU	0	0	100.00%	100.00%
HSTU	0	0	100.00%	100.00%
IU	0	0	100.00%	100.00%
IUT	0	0	100.00%	100.00%
JKKNIU	0	0	100.00%	100.00%
JnU	0	0	100.00%	100.00%
JU	0	0	100.00%	100.00%
JUST	0	0	100.00%	100.00%
<b>KAU</b>	<b>8</b>	<b>8</b>	<b>99.98%</b>	<b>99.98%</b>
KU	0	0	100.00%	100.00%
KUET	0	0	100.00%	100.00%
MBSTU	0	0	100.00%	100.00%
MIST	0	0	100.00%	100.00%
NSTU	0	0	100.00%	100.00%
NU	0	0	100.00%	100.00%
NU DHANMONDI	0	0	100.00%	100.00%
NU SHUKRABAD	0	0	100.00%	100.00%
PSTU	0	0	100.00%	100.00%
PUST	0	0	100.00%	100.00%
RMSTU	0	0	100.00%	100.00%
RU	0	0	100.00%	100.00%
RUET	0	0	100.00%	100.00%
SAU	0	0	100.00%	100.00%
SBAU	0	0	100.00%	100.00%
SMU	0	0	100.00%	100.00%
SUST	0	0	100.00%	100.00%

➤ **Private Universities:**

Table 2: Institution Wise Link Availability of private universities.

Name of Institutes	Outage (In Minute)	Maintenance (Minute)	Availability (W/O Maintenance)	Availability (With Maintenance)
AUB	0	0	100.00%	100.00%
AUST	0	0	100.00%	100.00%
AUW	0	0	100.00%	100.00%
BARC	0	0	100.00%	100.00%
BRAC	0	0	100.00%	100.00%
CCN	0	0	100.00%	100.00%
DIU	0	0	100.00%	100.00%
EU	0	0	100.00%	100.00%
IUB	0	0	100.00%	100.00%
IUBAT	0	0	100.00%	100.00%
LUS	0	0	100.00%	100.00%
MIU	0	0	100.00%	100.00%
NBIU	0	0	100.00%	100.00%
NSU	0	0	100.00%	100.00%
<b>VU</b>	<b>1122</b>	<b>1122</b>	<b>97.31%</b>	<b>97.31%</b>

➤ **Medical Colleges and Universities:**

Table 3: Institution Wise Link Availability of medical universities and colleges.

Name of Institutes	Outage (In Minute)	Maintenance (Minute)	Availability (W/O Maintenance)	Availability (With Maintenance)
<b>CMC</b>	<b>7530</b>	<b>7530</b>	<b>81.97%</b>	<b>81.97%</b>
CME	0	0	100.00%	100.00%
CoxBMC	0	0	100.00%	100.00%
DDC	0	0	100.00%	100.00%
DGHS	0	0	100.00%	100.00%
DMC	0	0	100.00%	100.00%
MAGOMC	0	0	100.00%	100.00%
MMC	0	0	100.00%	100.00%
NINMAS	0	0	100.00%	100.00%
RMC	0	0	100.00%	100.00%
<b>RPMC</b>	<b>337</b>	<b>337</b>	<b>99.19%</b>	<b>99.19%</b>
SBMC	0	0	100.00%	100.00%
SIRSMC	0	0	100.00%	100.00%
SSKMC	0	0	100.00%	100.00%
SSMC	0	0	100.00%	100.00%

➤ **Research Institutes and Others:**

Table 4: Institution Wise Link Availability of research institutes and others

Name of Institutes	Outage (In Minute)	Maintenance (Minute)	Availability (W/O Maintenance)	Availability (With Maintenance)
BARD	0	0	100.00%	100.00%
BARI	0	0	100.00%	100.00%
BFRI	0	0	100.00%	100.00%
BIDS	0	0	100.00%	100.00%
BJRI	0	0	100.00%	100.00%
BLRI	0	0	100.00%	100.00%

Name of Institutes	Outage (In Minute)	Maintenance (Minute)	Availability (W/O Maintenance)	Availability (With Maintenance)
BMD	0	0	100.00%	100.00%
BRRRI	0	0	100.00%	100.00%
ICMAB	0	0	100.00%	100.00%
SPARRSO	0	0	100.00%	100.00%

➤ **CEDP Colleges:**

Table 5: Institution Wise Link Availability of colleges under CEDP.

Name of Institutes	Outage (In Minute)	Maintenance (Minute)	Availability (W/O Maintenance)	Availability (With Maintenance)
Ananda Mohan College	0	0	100.00%	100.00%
Azam Khan Govt. Commerce College	0	0	100.00%	100.00%
Bandarban Government College	769	769	98.16%	98.16%
Barishal Govt. Women's College	0	0	100.00%	100.00%
Bhawal Badre Alam Govt. College	0	0	100.00%	100.00%
Bhola Govt. College	0	0	100.00%	100.00%
Brindaban Govt. College	0	0	100.00%	100.00%
Chandina Redwan Ahmed College	244	244	99.42%	99.42%
Chandpur Govt. College	244	244	99.42%	99.42%
Chandpur Govt. Mohila College	0	0	100.00%	100.00%
Chittagong College, Chattogram	0	0	100.00%	100.00%
Chittagong Govt. Women's College	0	0	100.00%	100.00%
Chowmuhani Govt. S. A. College	244	244	99.42%	99.42%
Cox's Bazar City College	244	244	99.42%	99.42%
Cox's Bazar Govt. College	244	244	99.42%	99.42%
Cumilla Government Women's College	244	244	99.42%	99.42%
Cumilla Victoria Govt. College	244	244	99.42%	99.42%
Dakshin Surma Govt. College	0	0	100.00%	100.00%
Daulatpur College	347	347	99.17%	99.17%
Daulatpur Day/Night College	0	0	100.00%	100.00%
Dhaka City College	0	0	100.00%	100.00%
Dinajpur Government College	0	0	100.00%	100.00%
Government Bm College	0	0	100.00%	100.00%
Government City College	244	244	99.42%	99.42%
Government Debendra College	0	0	100.00%	100.00%
Government M. M. College	1634	1634	96.09%	96.09%
Government Sundarban Adarsha College	0	0	100.00%	100.00%
Govt. Ashek Mahmud College	0	0	100.00%	100.00%
Govt. B.L. College	0	0	100.00%	100.00%
Govt. Bangabandhu College	0	0	100.00%	100.00%
Govt. Barishal College	0	0	100.00%	100.00%
Govt. Begum Rokeya College	0	0	100.00%	100.00%
Govt. BMC Women's College	0	0	100.00%	100.00%
Govt. College Of Commerce	0	0	100.00%	100.00%
Govt. G.B.G. College	0	0	100.00%	100.00%
Govt. H. S. S. College	0	0	100.00%	100.00%
Govt. Mujibur Rahman Women's College	9697	9697	76.78%	76.78%
Govt. P. C. College	0	0	100.00%	100.00%
Govt. Rashidazzoha Womens College	0	0	100.00%	100.00%
Govt. Shah Sultan College	4217	4217	89.90%	89.90%
Govt. Syed Hatem Ali College	0	0	100.00%	100.00%
Govt. Tolaram College	0	0	100.00%	100.00%
Govt. Zaheda Safir Mohila College	0	0	100.00%	100.00%

Name of Institutes	Outage (In Minute)	Maintenance (Minute)	Availability (W/O Maintenance)	Availability (With Maintenance)
Govt. Zia Mohila College	7693	7693	81.58%	81.58%
Govt. Zillur Rahman Mohila College	3135	3135	92.49%	92.49%
Gurudayal Government College	0	0	100.00%	100.00%
Habibullah Bahar College	0	0	100.00%	100.00%
Ishwardi Govt.College	0	0	100.00%	100.00%
Islamia Govt. College	0	0	100.00%	100.00%
Jahanara Latif Mohila College	0	0	100.00%	100.00%
Jashore Govt. Mohila College	0	0	100.00%	100.00%
Jessore Govt. City College	0	0	100.00%	100.00%
Jhalakathi Govt. College, Jhalakathi	0	0	100.00%	100.00%
Kadirdi College	0	0	100.00%	100.00%
Kazi Mohammad Shafiqul Islam College	5181	5181	87.59%	87.59%
Khilgaon Model College	0	0	100.00%	100.00%
Khulna Govt. Mohila College	0	0	100.00%	100.00%
Kishoreganj Govt. Mohila College	0	0	100.00%	100.00%
Kumira Mahila Degree College	0	0	100.00%	100.00%
Kumudini Govt. College	52	52	99.88%	99.88%
Meherpur Govt. College	0	0	100.00%	100.00%
Mohammadpur Kendriya College	0	0	100.00%	100.00%
Mohammadpur Mohila College	0	0	100.00%	100.00%
Moulvibazar Government College	0	0	100.00%	100.00%
Muminunnesa Govt. Mohila College	0	0	100.00%	100.00%
Naogaon Govt. College	0	0	100.00%	100.00%
Narail Govt. Victoria College	0	0	100.00%	100.00%
Narayanganj College	0	0	100.00%	100.00%
Narsingdi Govt. College	0	0	100.00%	100.00%
Nawab Siraj-Ud-Dowla Govt. College	0	0	100.00%	100.00%
Nawabganj Govt. College	0	0	100.00%	100.00%
Netrakona Govt. College	0	0	100.00%	100.00%
New Govt. Degree College	0	0	100.00%	100.00%
Nilphamari Govt. College	117	117	99.72%	99.72%
Patiya Govt. College	244	244	99.42%	99.42%
Puran Bazar Degree College	244	244	99.42%	99.42%
Rajshahi College	0	0	100.00%	100.00%
Rajshahi Government Mahila College	0	0	100.00%	100.00%
Rajshahi Govt. City College	0	0	100.00%	100.00%
Rangamati Government College	244	244	99.42%	99.42%
Rangpur Government College	0	0	100.00%	100.00%
Rani Bhawani Govt. Women's College	0	0	100.00%	100.00%
Ranisankail Degree College	509	509	98.78%	98.78%
Sakhipur Residential Mahila College	0	0	100.00%	100.00%
Satkhira Govt. College	0	0	100.00%	100.00%
Satkhira Govt. Mahila College	0	0	100.00%	100.00%
Shahid Smriti Govt. College	0	0	100.00%	100.00%
Sheikh Fazilatunnesa Muzib Women's (Honours) College	984	984	97.64%	97.64%
Siddheswari College	0	0	100.00%	100.00%
Siddheswari Girls' College	0	0	100.00%	100.00%
Syed Ahmed College	0	0	100.00%	100.00%
Tejgaon College	0	0	100.00%	100.00%
Tongi Govt. College	0	0	100.00%	100.00%
University Women's Federation College	535	535	98.72%	98.72%
Uttar Bangla College	369	369	99.12%	99.12%

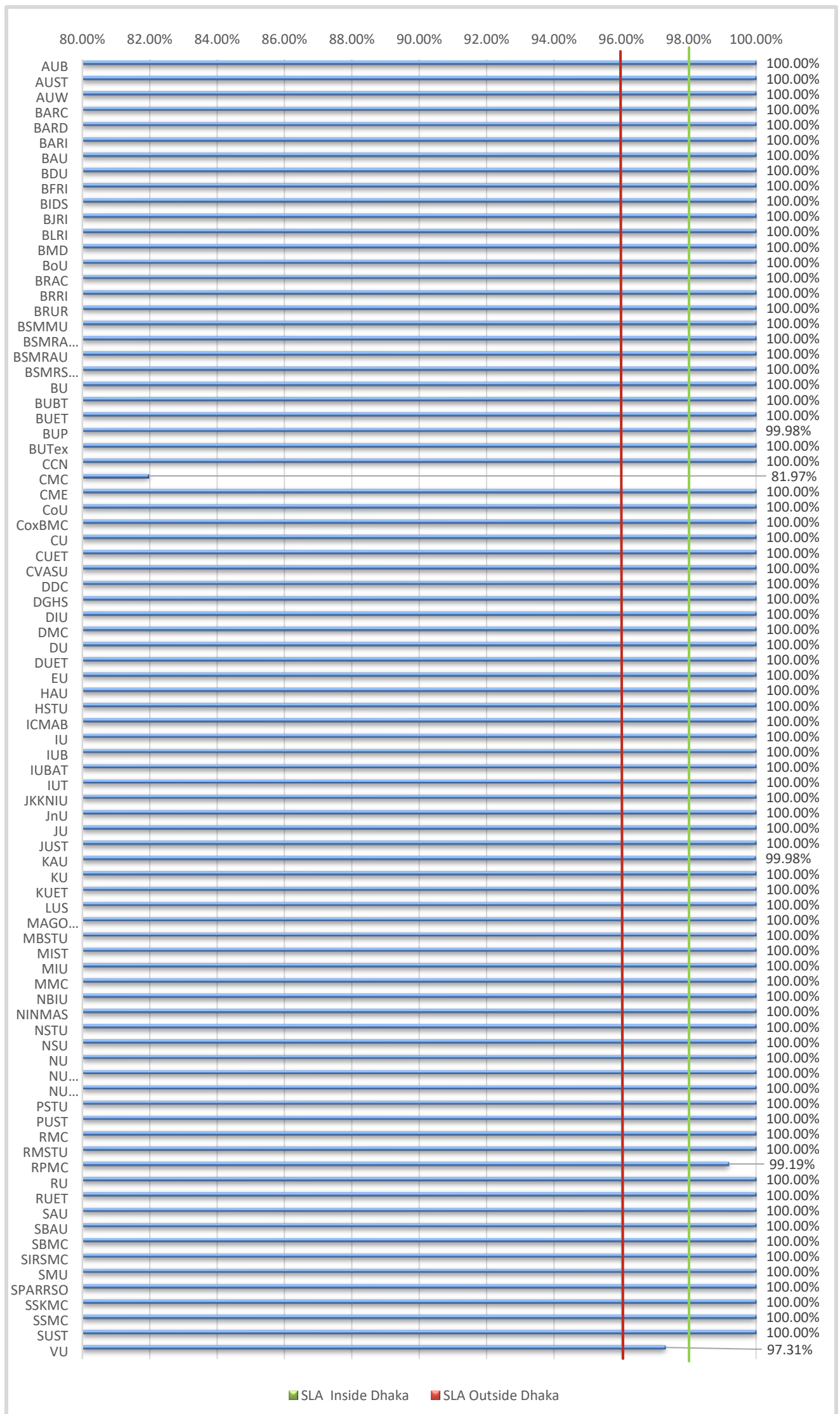


Figure 1: Institution Wise Link Availability considering "Planned Maintenance" as non-outage



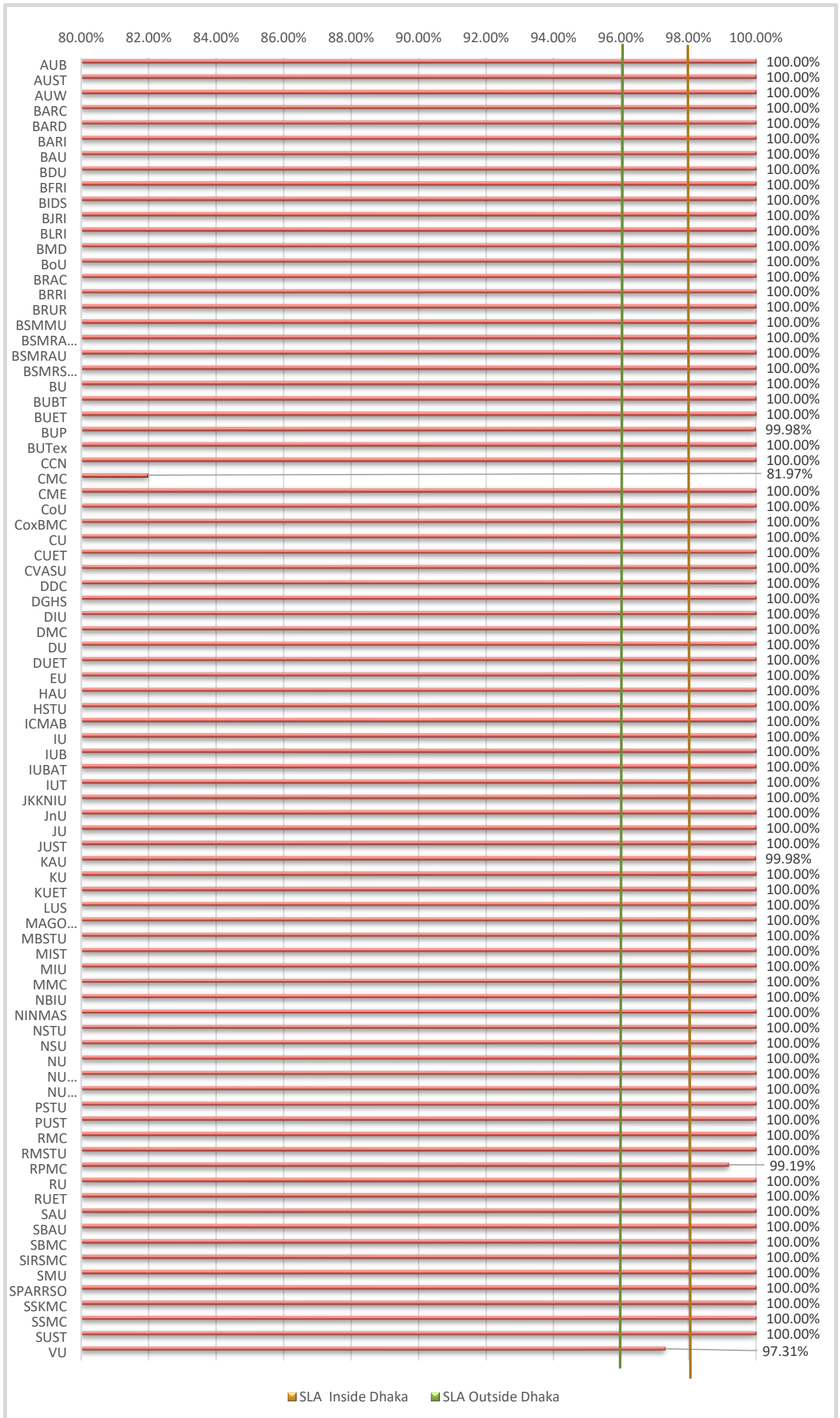


Figure 2: Institution Wise Link Availability considering "Planned Maintenance" as outage

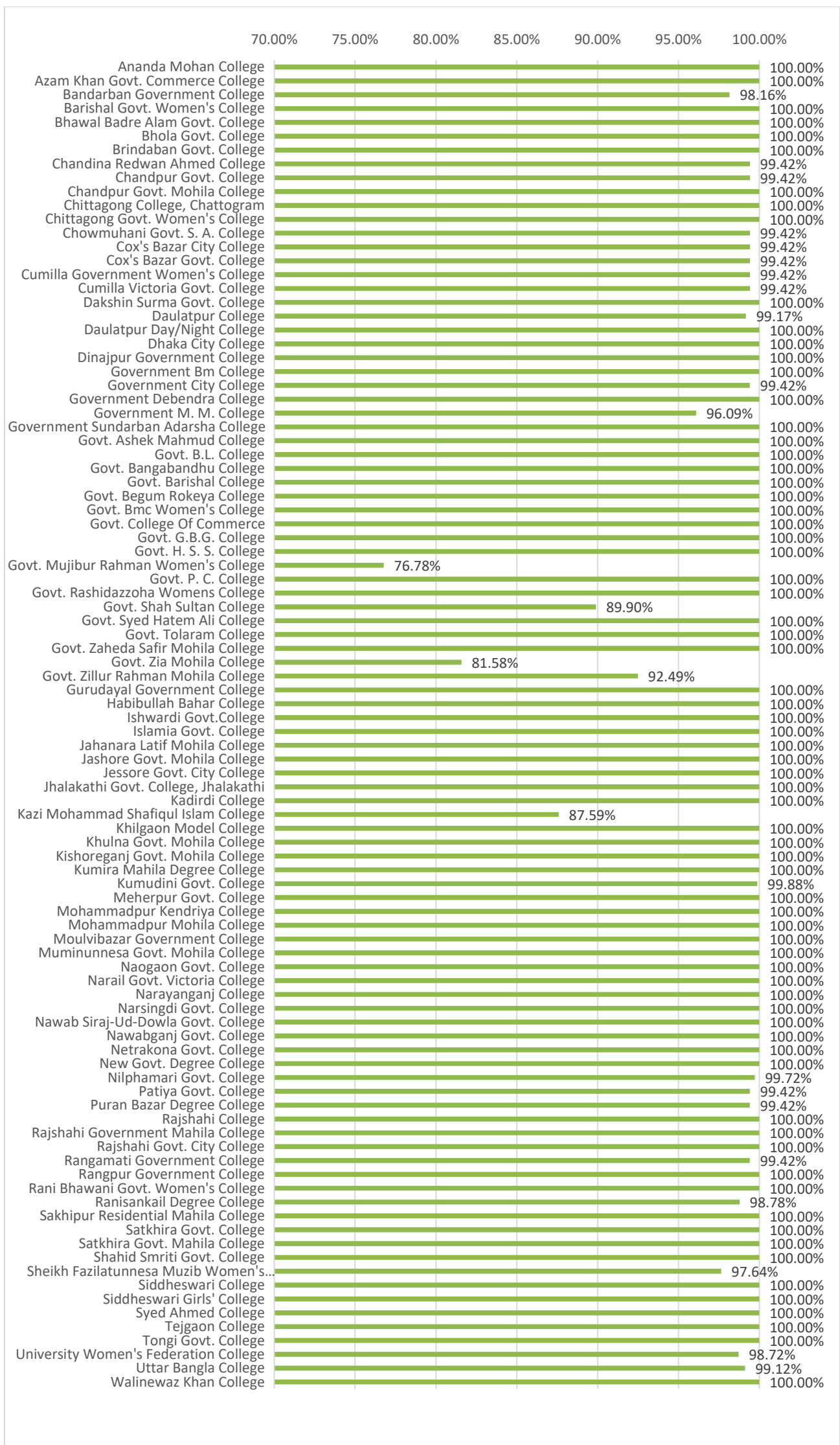


Figure 3: College-Wise Link Availability considering “Planned Maintenance” as outage

### 3. MAJOR OUTAGE OF January 2024

- ❖ **Ticket# 240216-0002**  
**Affected Member** : CMC  
**Recovery Time** : 7530  
**SLA Compliance** : Not Fulfilled  
**Problem Details** : There was a fiber break near Probatak Mor in Chittagang, leading to disruption in services. Mr. Rasel, the technician, was tasked with locating and repairing the break, encountering challenges including local restrictions on work and difficulties in locating the fiber endpoints. After several attempts, Mr. Rasel successfully restored the fiber connection.
  
- ❖ **Ticket# 240221-0003**  
**Affected Member** : RPMC  
**Recovery Time** : 337  
**SLA Compliance** : Fulfilled  
**Problem Details** : A core break was identified 3.32km from BRUR to RPMC. Mr. Mushfiq, the NMSS, is addressing the issue. He rejoined the core and replaced the TG box, restoring the link's operation.
  
- ❖ **Ticket# 240228-0008**  
**Affected Member** : VU  
**Recovery Time** : 1122  
**SLA Compliance** : Not Fulfilled  
**Problem Details** : A fiber break was discovered near Talaimari bus stand handhole, possibly due to theft. Mr. Asif, the NMSS, is actively working on resolving the issue, including coordinating with relevant parties like VU concern. The team successfully restored an underground fiber link without needing new cables.

### 4. Traffic Statistics

#### ➤ Public Universities:

Table 5: Institution Wise Traffic Statistics of public universities

INSTITUTION	TOTAL TRAFFIC		AVERAGE BW		MAXIMUM BW	
	IN (TB)	OUT (TB)	IN (Mbps)	OUT (Mbps)	IN (Mbps)	OUT (Mbps)
BAU	562.5	42.88	1800	136.91	2990	231.11
BDU-Dhaka	0.077	0.872	0.247	2.78	4.37	19.93
BDU-Kalikor	34.25	5.08	110.38	16.38	234.88	92.81
BOU	5.14	30.74	98.45	16.46	261.75	61.99
BRUR	75.81	5.71	242.05	18.23	492.47	41.06
BSMMU	70.91	16.83	226.41	53.73	610.54	144.47
BSMRAAU	2.62	0.301	8.36	0.96	45.17	12.99
BSMRAAU Lalmonirhat	1.33	11.56	4.23	36.9	79.17	113.37
BSMRAU	103.45	12.78	330.31	40.82	602.61	102.49
BSMRSTU	42.36	3.95	135.24	12.62	373.81	4062
BU	143.34	18.17	457.68	58.02	782.03	148.81
BUET	532.81	83.42	1700	233.3	2630	509.94
BUP	70.54	7.9	250.43	18.07	624.33	64.95
BUTex	34.81	3.04	111.14	9.71	276.6	37.94
CMU	1.32	0.085	4.23	0.274	23.44	2.61
CoU	96.69	8.51	309.61	27.25	569.74	99.4
CU	201.64	19.56	643.8	62.45	1030	133.62

INSTITUTION	TOTAL TRAFFIC		AVERAGE BW		MAXIMUM BW	
	IN (TB)	OUT (TB)	IN (Mbps)	OUT (Mbps)	IN (Mbps)	OUT (Mbps)
CUET	270.41	25.12	863.38	80.2	1570	145.96
CVASU	87.05	6.94	278.73	22.23	492.35	56.1
DU	607.61	62.191	1940	198.53	3520	356.72
DUET	110.32	10.31	352.25	32.92	743	88.01
HAU	0.494	4.31	1.58	13.75	15.28	76.68
HSTU	17.12	2.14	54.67	6.84	198.25	159.43
IU	219.43	19.62	700.62	62.64	1130	146.9
JKKNIU	22.17	1.75	70.99	5.59	204.07	25.15
JNU	67.16	6.67	214.42	21.3	536.61	82.77
JU	87.1	9.5	278.91	30.41	689.11	112.26
JUST	103.84	10.1	331.55	32.26	649.79	111.9
KU	36.22	3.85	117.33	12.48	397.87	57.1
KUET	307.72	37.83	982.49	120.79	1700	261.26
MBSTU	101	8.04	322.47	25.67	603.53	59.5
MIST	14.86	2.52	47.44	8.06	104.37	22.42
NSTU	49.24	4.39	157.23	14	411.22	89.39
NU	12.73	28.1	40.66	89.71	249.71	118.29
NU Dhaka	2.73	0.384	8.73	1.23	65.66	21.12
NU Sukrabad	0.047	0.655	0.152	2.09	6.43	87.03
PSTU	237.48	23.3	760.43	74.6	1210	199.66
PUST	47.17	4.39	150.6	14.02	327.6	43.75
RMSTU	1.76	0.179	5.63	0.576	54.02	1060
RU	109.41	13.87	349.33	44.3	805.21	120.53
RUET	197.24	37.83	629.75	58.25	965.97	125.65
SAU	102.71	7.76	327.95	24.79	563.3	55.18
SBAU	62.55	4.85	199.73	15.49	388.92	51.76
SMU	0.097	1.49	0.311	4.77	6.71	38.09
SUST	271.81	25.5	867.86	81.41	1530	173.92

➤ **Private Universities:**

Table 6: Institution Wise Traffic Statistics of private universities

INSTITUTION	TOTAL TRAFFIC		AVERAGE BW		MAXIMUM BW	
	IN (TB)	OUT (TB)	IN (Mbps)	OUT (Mbps)	IN (TB)	OUT (TB)
AUB	3.5	0.448	11.23	1.44	70.62	70
AUST	3.48	0.444	11.12	1.42	64.44	12.48
AUW	46.13	5.3	147.29	16.93	260.73	71.47
BAUST	0.283	0.026	0.903	0.086	9.43	1.7
BRAC	3.06	0.076	9.77	0.243	456.45	47.14
BRACU ASHULIA	1.78	0.502	5.71	1.61	144.22	52.75
BUBT	0.011	0.001	0.033	0.004	6.68	0.95
CCN	4.25	0.347	13.61	1.11	37.84	6.16
DIU	2.84	0.285	7.08	0.911	0.355	0.313
EU	2.46	0.005	7.93	0.018	89.28	5.45
EWU	0	0	0	0	0	0
IUBAT	6.99	0.917	22.64	2.97	186.75	30.26
IUT	75.48	8.53	241.01	27.24	542.42	71.47
KUAU	0.293	0.026	0.937	0.086	6.03	6.03
LU	8.21	6.81	26.21	21.74	110.96	47.05
NBIU	1.82	0.124	5.81	0.397	29.82	8.56
NSU	0.067	0.066	0.215	0.211	7.26	7.37
VU	0.907	0.424	2.9	1.36	21.8	18.66

➤ **Research Institute, Medical Universities and Others:**

Table 7: Institution Wise Traffic Statistics of other institutes

INSTITUTION	TOTAL TRAFFIC		AVERAGE BW		MAXIMUM BW	
	IN (TB)	OUT (TB)	IN (Mbps)	OUT (Mbps)	IN (TB)	OUT (TB)
BARC	0.186	0.082	0.596	0.264	50.32	33.36
BARI	9.06	4.09	29.09	13.12	168.02	106.68
BFRI	0.106	1.22	0.342	3.91	5.98	27.94
BIDS	0	0	0	0	0	0
BJRI	1.78	0.15	0.005	0.479	1.97	0.166
BLRI	12.44	0.981	39.72	3.13	120.86	13.31
BRRRI	9.63	0.937	30.73	2.99	132.07	15.48
CME	0.349	0.028	1.12	0.09	14.32	0.924
ICMAB	0.0052	0.005	0.016	0.017	0.068	3.42
Ninmas	4.69	0.244	0.014	0.781	0.719	0.019

➤ **CEDP Colleges:**

Table 8: Institution Wise Traffic Status of CEDP Colleges.

INSTITUTION	TOTAL TRAFFIC		AVERAGE BW		MAXIMUM BW	
	IN (TB)	OUT (TB)	IN (Mbps)	OUT (Mbps)	IN (Mbps)	OUT (Mbps)
ANANDA MOHAN COLLEGE	3.61	0.487	11.53	1.56	65.36	16.96
AZAM KHAN GOVT. COMMERCE COLLEGE	1.99	0.362	6.34	1.16	42.96	10.85
BANDARBAN GOVERNMENT COLLEGE	1.94	0.166	6.19	0.53	31.97	11.4
BARISHAL GOVT. WOMEN'S COLLEGE	4.7	0.778	15.01	2.48	63.81	31.9
BHAWAL BADRE ALAM GOVT. COLLEGE	1.56	0.185	4.99	0.594	48.41	14.75
BHOLA GOVT. COLLEGE	0.042	0.004	0.156	0.017	1.9	0.887
BRINDABAN GOVT. COLLEGE	1.09	0.096	3.49	0.308	39.99	5.57
CHANDINA REDWAN AHMED COLLEGE	3.91	0.283	12.48	0.904	59.23	10.64
CHANDPUR GOVT. COLLEGE	1.48	0.172	4.71	0.549	31.84	7.1
CHANDPUR GOVT. MOHILA COLLEGE	2.08	0.238	6.65	0.762	41.37	16.8
CHITTAGONG COLLEGE, CHATTOGRAM	8.9	0	28.4	0	44.07	0
CHITTAGONG GOVT. WOMEN'S COLLEGE	5.52	0.553	17.9	1.79	83.63	15.27
CHOWMUHANI GOVT. S. A. COLLEGE	1.15	0.206	3.68	0.658	33.44	11.1
COX'S BAZAR CITY COLLEGE	2.17	0.305	6.92	0.975	51.35	8.87
COX'S BAZAR GOVT. COLLEGE	2.32	0.232	7.41	0.742	52.24	5.99
CUMILLA GOVERNMENT WOMEN'S COLLEGE	1.08	0.127	3.43	0.406	24.83	4.23
CUMILLA VICTORIA GOVT. COLLEGE	2.68	0.265	8.56	0.846	39.5	6.91
DAKSHIN SURMA GOVT. COLLEGE	0.413	0.043	1.32	0.139	16.76	3.3
DAULATPUR COLLEGE	1.93	0.222	6.15	0.71	51.77	16.8
DAULATPUR DAY/NIGHT COLLEGE	1.93	0.222	6.15	0.71	51.77	16.8
DHAKA CITY COLLEGE	0.079	0.006	0.254	0.027	2.71	0.695
DINAJPUR GOVERNMENT COLLEGE	1.4	0.182	4.47	0.582	34.26	7.45
GOVERNMENT BM COLLEGE	8.23	0.874	26.26	2.79	133.35	14.65
GOVERNMENT CITY COLLEGE	2.88	0.392	9.19	1.25	51.85	18.39
GOVERNMENT DEBENDRA COLLEGE	1.82	0.14	5.82	0.447	49.06	7.75
GOVERNMENT M. M. COLLEGE	0.904	0.093	2.93	0.302	39.86	9.82
GOVERNMENT SUNDARBAN ADARSHA COLLEGE	1.12	0.087	3.59	0.28	33.83	4.93
GOVT. ASHEK MAHMUD COLLEGE	1.08	0.114	3.44	0.364	32.49	6.39
GOVT. B.L. COLLEGE	3.65	0.326	11.67	1.04	97.42	19.83

INSTITUTION	TOTAL TRAFFIC		AVERAGE BW		MAXIMUM BW	
	IN (TB)	OUT (TB)	IN (Mbps)	OUT (Mbps)	IN (Mbps)	OUT (Mbps)
GOVT. BANGABANDHU COLLEGE	3.39	0.264	10.83	0.845	47.35	9.56
GOVT. BARISHAL COLLEGE	1.88	0.187	6	0.597	34.4	11.39
GOVT. BEGUM ROKEYA COLLEGE	8.74	0.827	27.89	2.64	65.6	15.39
GOVT. BMC WOMEN'S COLLEGE	1.68	0.163	5.37	0.522	23.39	5.11
GOVT. COLLEGE OF COMMERCE	0.008	0	28.35	0	45.94	0
GOVT. G.B.G. COLLEGE	2.74	0.347	8.74	1.11	56.34	15.3
GOVT. H. S. S. COLLEGE	3.9	0.406	12.46	1.3	59.88	12.59
GOVT. MUJIBUR RAHMAN WOMEN'S COLLEGE	3.53	0.346	11.26	1.11	53.42	12.27
GOVT. P. C. COLLEGE	0.459	0.059	1.47	0.19	19.05	5.73
GOVT. RASHIDAZZOKHA WOMENS COLLEGE	0.655	0.061	2.09	0.195	38.33	2.23
GOVT. SHAH SULTAN COLLEGE	1.35	0.195	4.3	0.625	29.39	6.64
GOVT. SYED HATEM ALI COLLEGE	0.437	0.034	16.74	1.33	54.5	4.91
GOVT. TOLARAM COLLEGE	1.15	0.107	3.68	0.321	30.24	3.77
GOVT. ZAHEDA SAFIR MOHILA COLLEGE	0.506	0.035	1.62	0.114	11.23	1.89
GOVT. ZIA MOHILA COLLEGE	0.06	0.009	3.71	0.6	37.98	5.61
GOVT. ZILLUR RAHMAN MOHILA COLLEGE	0.059	0.718	2.29	0.188	25.75	3.24
GURUDAYAL GOVERNMENT COLLEGE	1.77	0.159	5.64	0.5	36.93	5.38
HABIBULLAH BAHAR COLLEGE	2.87	0.331	9.15	1.06	57.19	16.39
ISHWARDI GOVT.COLLEGE	1.48	0.225	4.72	0.719	39.6	17.29
ISLAMIA GOVT. COLLEGE	0.953	0.096	3.04	0.308	15.76	6.87
JAHANARA LATIF MOHILA COLLEGE	0.576	0.051	1.88	0.168	30.84	6.4
JASHORE GOVT. MOHILA COLLEGE	2.9	0.252	9.27	0.805	39.81	7.02
JESSORE GOVT. CITY COLLEGE	1.26	0.102	4.03	0.327	32.82	3.38
JHALAKATHI GOVT. COLLEGE, JHALAKATHI	2.92	0.356	9.33	1.14	89.13	16.34
KADIRDI COLLEGE	2.28	0.261	7.28	0.834	46.16	13.42
KAZI MOHAMMAD SHAFIQUK ISLAM COLLEGE	4.61	0.486	14.72	1.55	62.69	15.58
KHILGAON MODEL COLLEGE	1.16	0.095	3.69	0.305	32.18	8.76
KHULNA GOVT. MOHILA COLLEGE	4.33	0.551	13.82	1.76	56.35	24.34
KISHOREGANJ GOVT. MOHILA COLLEGE	3.94	0.461	12.59	1.47	46	11.61
KUMIRA MAHILA DEGREE COLLEGE	0.513	0.049	1.61	0.157	19.31	6.42
KUMUDINI GOVT. COLLEGE	2.91	0.284	9.28	0.908	41.93	7.53
MEHERPUR GOVT. COLLEGE	1.82	0.161	5.88	0.523	30.39	5.41
MOHAMMADPUR KENDRIYA COLLEGE	1.77	0.216	5.64	0.69	42.89	13.2
MOHAMMADPUR MOHILA COLLEGE	0.745	0.137	2.38	0.437	15.18	9.21
MOULVIBAZAR GOVERNMENT COLLEGE	0.836	0.071	2.67	0.226	17.46	2.53
MUMINUNNESA GOVT. MOHILA COLLEGE	1.6	0.131	5.09	0.42	30.75	9.31
NAOGAON GOVT. COLLEGE	1.61	0.142	5.13	0.455	28.18	5.12
NARAIL GOVT. VICTORIA COLLEGE	2.26	0.238	7.23	0.761	55.29	7.15
NARAYANGANJ COLLEGE	1.04	0.116	3.33	0.372	67.88	9.84
NARSINGDI GOVT. COLLEGE	2.09	0.248	6.67	0.791	53.19	10.31
NAWAB SIRAJ-UD-DOWLA GOVT. COLLEGE	0.416	0.039	1.74	0.163	16.72	8.12
NAWABGANJ GOVT. COLLEGE	2.19	0.177	7	0.568	58.08	7.12
NETRAKONA GOVT. COLLEGE	1.54	0.209	4.91	0.668	35.43	9.58
NEW GOVT. DEGREE COLLEGE	2.42	0.32	7.72	1.02	33.49	7.8
NILPHAMARI GOVT. COLLEGE	1.12	0.109	3.59	0.349	28.33	2.94
PATIYA GOVT. COLLEGE	0.954	0.067	3.05	0.216	32.91	4.54
PURAN BAZAR DEGREE COLLEGE	1.81	0.206	5.78	0.659	34.76	12.27
RAJSHAHI COLLEGE	2.03	0.204	6.5	0.653	88.74	8.69
RAJSHAHI GOVERNMENT MAHILA COLLEGE	1.91	0.229	4.11	0.732	55.48	14.64



INSTITUTION	TOTAL TRAFFIC		AVERAGE BW		MAXIMUM BW	
	IN (TB)	OUT (TB)	IN (Mbps)	OUT (Mbps)	IN (Mbps)	OUT (Mbps)
RAJSHAHI GOVT. CITY COLLEGE	0.763	0.104	2.44	0.334	50.53	8.75
RANGAMATI GOVERNMENT COLLEGE	1.86	0.227	5.93	0.724	44.18	12.82
RANGPUR GOVERNMENT COLLEGE	4.03	0.44	12.85	1.41	45.83	21.67
RANI BHAWANI GOVT. WOMEN'S COLLEGE	2.86	0.335	9.12	1.07	29.75	15.59
RANISANKAIL DEGREE COLLEGE	1.08	0.115	3.44	0.369	34.14	8.94
SAKHIPUR RESIDENTIAL MAHILA COLLEGE	1.45	0.278	4.62	0.889	41.22	21.11
SATKHIRA GOVT. COLLEGE	2.03	0.186	6.47	0.594	47.42	14.25
SATKHIRA GOVT. MAHILA COLLEGE	1.22	0.167	3.91	0.534	34.24	11.45
SHAHID SMRITI GOVT. COLLEGE	3.85	0.356	12.28	1.14	166.99	27.63
SHEIKH FAZILATUNNESA MUZIB WOMEN'S (HONOURS) COLLEGE	2.78	0.512	9.87	1.82	64.26	33.05
SIDDHESWARI COLLEGE	2.41	0.181	7.69	0.575	38.85	8.2
SIDDHESWARI GIRLS' COLLEGE	2.07	0.152	6.61	0.488	65.36	3.73
SYED AHMED COLLEGE	1.34	0.116	4.29	0.371	35.89	6.25
TEJGAON COLLEGE	4.7	1.87	15.02	5.98	94.53	26.82
TONGI GOVT. COLLEGE	2.34	0.321	7.48	1.03	44.81	16.94
UTTAR BANGLA COLLEGE	9.75	0.927	31.13	2.96	72.75	17.29
WALINEWAZ KHAN COLLEGE	0.265	0.021	0.846	0.068	18.01	4.23

## 5. TOTAL TRAFFIC

Table 8: Total Traffic (used by clients)

<b>Total Download</b>	<b>5538.55 TB</b>
<b>Total Upload</b>	<b>691.25 TB</b>

### ➤ 5.1 Top Ten Institutions in Bandwidth Usage:

Table 9: Bandwidth Usage of Top Ten Institutions

INSTITUTION	AVERAGE BW		MAXIMUM BW		TOTAL TRAFFIC	
	IN(Mbps)	OUT(Mbps)	IN (Mbps)	OUT(Mbps)	IN(TB)	OUT(TB)
<b>DU</b>	1940	198.53	3520	356.72	607.61	62.191
<b>BAU</b>	1800	136.91	2990	231.11	562.5	42.88
<b>BUET</b>	1700	233.3	2630	509.94	532.81	83.42
<b>KUET</b>	982.49	120.79	1700	261.26	307.72	37.83
<b>SUST</b>	867.86	81.41	1530	173.92	271.81	25.5
<b>CUET</b>	863.38	80.2	1570	145.96	270.41	25.12
<b>PSTU</b>	760.43	74.6	1210	199.66	237.48	23.3
<b>IU</b>	700.62	62.64	1130	146.9	219.43	19.62
<b>CU</b>	643.8	62.45	1030	133.62	201.64	19.56
<b>RUET</b>	629.75	58.25	965.97	125.65	197.24	37.83

## 6. ONLINE EDUCATION

### 6.1 Institution Wise Video Conferencing Usage Statistics

#### ➤ Public Universities and Colleges:

Table 10: Video Conferencing Usage by Public Universities and Colleges

Name of The Institution	Total Classes	Total Hours (hr:mm:ss)	Total Participants
Bangabandhu Digital University (BDU)	50	59:52:49	1395
Bangabandhu Sheikh Mujib Medical University (BSMMU)	32	40:37:34	742
Bangabandhu Sheikh Mujibur Rahman Agricultural University	44	37:25:13	203
Bangabandhu Sheikh Mujibur Rahman Maritime University	47	67:20:01	611
Bangladesh Agricultural University (BAU)	277	325:22:14	10580
Bangladesh Open University (BOU)	305	395:40:43	8857
Bangladesh University of Engineering & Technology (BUET)	1874	2071:54:57	39171
Bangladesh University of Professionals (BUP)	721	987:36:25	38371
Bangladesh University of Textiles (BUTEX)	115	97:08:43	8541
Barishal University (BU)	8	6:35:21	30
Begum Rokeya University, Rangpur (BRUR)	75	76:36:07	2803
BSFMSTU	29	31:49:00	1120
BSMRAAU	53	87:11:34	538
BSMRSTU	157	154:15:29	8917
Chandpur Science and Technology University (CSTU)	7	7:28:41	271
Chittagong University of Engineering & Technology (CUET)	334	385:26:13	7861
Chittagong Veterinary and Animal Sciences University (CVASU)	36	45:28:09	1032
Comilla University (CoU)	146	169:21:40	5454
Comilla Victoria Government College	39	41:30:00	878
Dhaka University of Engineering & Technology (DUET)	236	250:55:13	9999
Eden Mohila College	24	25:14:01	1969
Faridpur Engineering College, Faridpur	9	9:21:32	74
Habiganj Agricultural University (HAU)	2	0:43:04	4
Hajee Mohammad Danesh Science & Technology University (HSTU)	189	241:31:15	11576
Islamic University, Bangladesh (IU)	160	175:51:07	4637
Jagannath University (JnU)	456	508:00:08	20261
Jahangirnagar University (JU)	638	785:33:53	26533
Jashore University of Science and Technology (JUST)	271	279:38:33	4814
Jatiya Kabi Kazi Nazrul Islam University (JKKNIU)	38	49:50:49	1698
Khulna Agricultural University (KAU)	23	26:40:00	625
Khulna University (KU)	305	360:34:36	7750
Khulna University of Engineering & Technology (KUET)	276	308:45:13	3560
Kurigram Agricultural University (KAU)	2	1:58:02	10
Lalmatia Mohila College	4	3:31:00	50
Mawlana Bhashani Science and Technology University (MBSTU)	95	85:16:36	1451
Mymensingh Engineering College	8	4:56:00	64
National Institute of Textile Engineering and Research (NITER)	52	46:57:01	1836
National University (NU)	435	1036:51:43	32360
Noakhali Science and Technology University (NSTU)	396	423:14:13	10917
Pabna University of Science and Technology (PUST)	74	69:24:10	3137
Patuakhali Science and Technology University (PSTU)	217	225:32:27	5701
Rabindra University, Bangladesh (RUB)	3	2:45:00	153
Rajshahi Medical University	2	2:17:33	55
Rajshahi University of Engineering & Technology (RUET)	267	293:12:16	7873
Rangamati Science and Technology University (RMSTU)	25	25:07:29	400



Name of The Institution	Total Classes	Total Hours (hr:mm:ss)	Total Participants
Royal University of Dhaka	17	12:05:00	79
Shahjalal University of Science and Technology (SUST)	528	528:10:10	12208
Sheikh Hasina University (SHU)	16	16:09:11	58
Sher-e-Bangla Agricultural University (SBAU)	105	246:07:09	6849
Sylhet Agricultural University (SAU)	33	34:40:01	244
UGC	3	2:46:53	35
University of Barisal (BU)	191	207:35:40	5567
University of Chittagong (CU)	369	437:19:33	15352
University of Dhaka (DU)	2429	2677:20:33	88224
University of Rajshahi (RU)	240	317:06:26	6418

➤ **Private Universities:**

Table 11: Video Conferencing Usage by Private Universities

Name of The Institution	Total Classes	Total Hours (hr:mm:ss)	Total Participants
Ahsanullah University of Science and Technology (AUST)	392	458:15:00	12581
Asian University For Women (AUW)	242	216:49:56	4475
Asian University of Bangladesh (AUB)	36	41:47:53	1100
Atish Dipankar University of Science and Technology	122	171:50:01	7237
Bangladesh Army University of Science and Technology (BAUST)	99	112:40:10	2034
Bangladesh Islami University (BIU)	35	42:19:00	769
Bangladesh University of Business and Technology (BUBT)	34	40:30:23	1945
Bangladesh University of Health Sciences	104	124:45:00	1794
BGC Trust University Bangladesh	9	10:25:47	183
BGMEA University of Fashion & Technology	68	80:21:00	2484
BGMEA University of Fashion & Technology	6	7:26:41	59
BRAC University	442	616:47:56	14564
Canadian University of Bangladesh	62	75:07:03	1308
Chittagong Independent University (CIU)	8	15:18:15	71
City University	160	173:11:05	6007
Daffodil International University	35	39:49:54	1408
Dhaka International University (DIU)	474	424:27:45	15740
East West University (EWU)	5	4:48:00	24
Eastern University	372	423:43:34	13708
European University of Bangladesh	61	61:33:00	2223
Feni University	32	41:08:01	385
Gono Bishwabidyalay	20	31:09:00	322
Gono Bishwabidyalay	16	16:25:43	63
Green University of Bangladesh	944	1124:21:38	26954
Independent University, Bangladesh	15	21:21:51	280
International Islamic University Chittagong (IIUC)	734	750:01:18	24482
International Standard University (ISU)	37	37:55:23	697
International University of Business Agriculture and Technology	392	454:56:39	21870
Islami Arabic University	3	2:49:19	38
Islamic University of Technology (IUT)	209	241:38:42	11430
Khwaja Yunus Ali University	1	2:06:00	130
Leading University, Sylhet	279	324:06:59	10682
Manarat International University	253	285:39:41	7897
Military Institute of Science and Technology (MIST)	403	593:40:23	8245
North East University Bangladesh	40	41:25:00	385
North South University	95	166:32:42	2808

Name of The Institution	Total Classes	Total Hours (hr:mm:ss)	Total Participants
Northern University of Business & Technology Khulna	36	44:48:00	914
Notre Dame University Bangladesh	4	3:09:00	23
Port City International University	34	53:42:01	1108
Premier University, Chittagong	128	146:00:04	5362
Presidency University	138	157:44:58	5567
Primeasia University	248	221:51:00	7728
Pundra University of Science & Technology	18	28:10:00	280
Rabindra Maitree University	12	4:53:00	96
Royal University of Dhaka (RUD)	7	10:12:07	81
RTM Al Kabir Technical University (RTM-AKTU)	35	33:50:26	340
Shanto-Mariam University of Creative Technology	235	268:29:00	7303
Sonargaon University (SU)	124	150:32:58	5732
Stamford University Bangladesh	252	344:39:31	4334
State University of Bangladesh	152	192:24:39	3316
The International University of Scholars	55	57:15:59	3062
UCSI University Bangladesh	1	0:56:01	5
United International University (UIU)	239	271:32:55	2856
University of Asia Pacific	104	136:24:03	2938
University of Information Technology and Sciences (UITS)	40	39:59:59	1077
University of Liberal Arts Bangladesh (ULAB)	53	77:02:23	2029
University of Science and Technology Chittagong (USTC)	15	14:03:00	173
University of South Asia	90	115:41:00	3416
Varendra University	24	27:07:47	665
World University	23	16:41:00	1464
World University Bangladesh (WUB)	733	626:18:36	63272
WUB	44	35:22:30	4528
Znrf University of Management science	91	157:03:01	2540

### ➤ Medical Colleges:

Table 12: Video Conferencing Usage by Medical Colleges

Name of The Institution	Total Classes	Total Hours (hr:mm:ss)	Total Participants
Ibrahim Medical College, Dhaka	20	34:12:00	188
ICDDRDB	13	16:47:04	157
North East Medical College (NEMC)	4	6:08:00	18
Rajshahi Medical University	3	1:38:00	20
Rangpur Community Medical College & Hospital (RCMC)	5	9:22:39	12
Rangpur Community Medical College (RCDC)	1	0:03:21	2
Sher-e-Bangla Medical College, Barisal	6	11:17:37	67
TMSS Medical College	18	19:35:00	1689

### ➤ Colleges:

Table 13: Video Conferencing Usage by Colleges

Name of The Institution	Total Classes	Total Hours (hr:mm:ss)	Total Participants
Barishal Cadet College (BCC)	15	11:07:10	148
Bhola Govt. College	10	4:49:14	91
Chittagong College	1	1:03:55	2
Cumilla Cadet College	22	57:59:06	106
Dhaka City College	9	8:26:37	406
Eden Mohila College	1	0:56:38	152
Govt. Ashek Mahmud College	1	1:23:35	5

Name of The Institution	Total Classes	Total Hours (hr:mm:ss)	Total Participants
Notre Dame College, Dhaka	32	37:53:13	784
Rajshahi Cadet College	49	71:39:28	598
Rangpur Govt. College	14	15:49:34	177
Shaikh Burhanuddin Post Graduate College	1	2:17:09	18
Syed Ahmed College	1	3:59:39	23
University Women's Federation College	2	1:34:50	19

➤ **Research Institutes and Others:**

Table 14: Video Conferencing Usage by Research institutes and Others

Name of The Institution	Total Classes	Total Hours (hr:mm:ss)	Total Participants
ABC Center for HR Development	1	0:20:52	3
AIRD	2	2:28:27	20
ASPI	15	21:46:05	86
ASSET Project	15	29:29:15	945
BAC	2	2:59:08	17
BANBEIS	3	2:50:47	118
Bangabandhu Textile Engineering College	5	6:30:00	264
Bangladesh Academy for Securities Markets - BASM	3	3:50:00	11
Bangladesh Agricultural Research Council [BARC]	19	24:08:48	133
Bangladesh Agricultural Research Institute (BARI)	22	30:59:47	519
Bangladesh Institute of Capital Market (BICM)	25	49:50:56	923
Bangladesh Institute of Development Studies	5	5:36:53	43
Bangladesh Institute of Management (BIM)	47	112:47:17	3935
Bangladesh Institute of Nuclear Agriculture (BINA)	7	14:45:00	231
Bangladesh Research and Education Network (BdREN)	8	33:32:00	2188
Bangladesh Rice Research Institute (BRRI)	14	29:51:12	303
Bangladesh Securities & Exchange Commission (BSEC)	10	17:07:56	408
Bangladesh Society of Medical Microbiologists	1	0:48:16	2
Bangladesh Sugar & Food Industries Corporation (BSFIC)	6	10:53:44	146
BARD	11	12:09:56	151
BdREN	90	108:52:04	953
BJRI	5	8:18:04	98
BPC Training Center	4	4:55:16	24
CEDP	8	6:42:12	55
Customs Intelligence & Investigation Directorate	11	9:42:37	519
Data Edge	110	406:23:28	785
Department of Telecommunications	1	2:26:34	88
Directorate of Inspection & Audit, Ministry of Education	3	3:58:50	75
Directorate of Technical Education	3	4:01:46	39
Express Systems Limited	5	5:13:35	38
Faith Bangladesh	7	7:29:07	29
fDLuDCf	8	14:42:38	429
Government Organization	21	36:41:01	533
Govt. Office	12	36:06:10	1894
ICMAB	69	66:47:43	5667
IEDCR	7	7:10:39	69
Institute of Chartered Secretaries of Bangladesh (ICSB)	25	49:51:27	841
Islami Bank Training and Research Academy (IBTRA)	12	75:29:59	3672
Local Government Engineering Department (LGED)	1	0:56:12	5
Ministry of Education	33	59:10:43	4927
NATA	11	15:37:01	59
National Board Of Revenue [NBR]	34	53:47:26	2461
Others	1564	1805:27:14	35893

<b>Name of The Institution</b>	<b>Total Classes</b>	<b>Total Hours (hr:mm:ss)</b>	<b>Total Participants</b>
<b>PMEAT</b>	14	61:41:58	3790
<b>Spectrum Engineering Consortium Limited</b>	43	54:31:52	258
<b>SPFMS</b>	72	133:48:51	2396
<b>Sylhet Engineering College (SEC)</b>	13	11:29:00	425
<b>Technical Teachers' Training College</b>	18	23:20:00	254

## 6.2 Institution Wise Video Conferencing Usage Graph

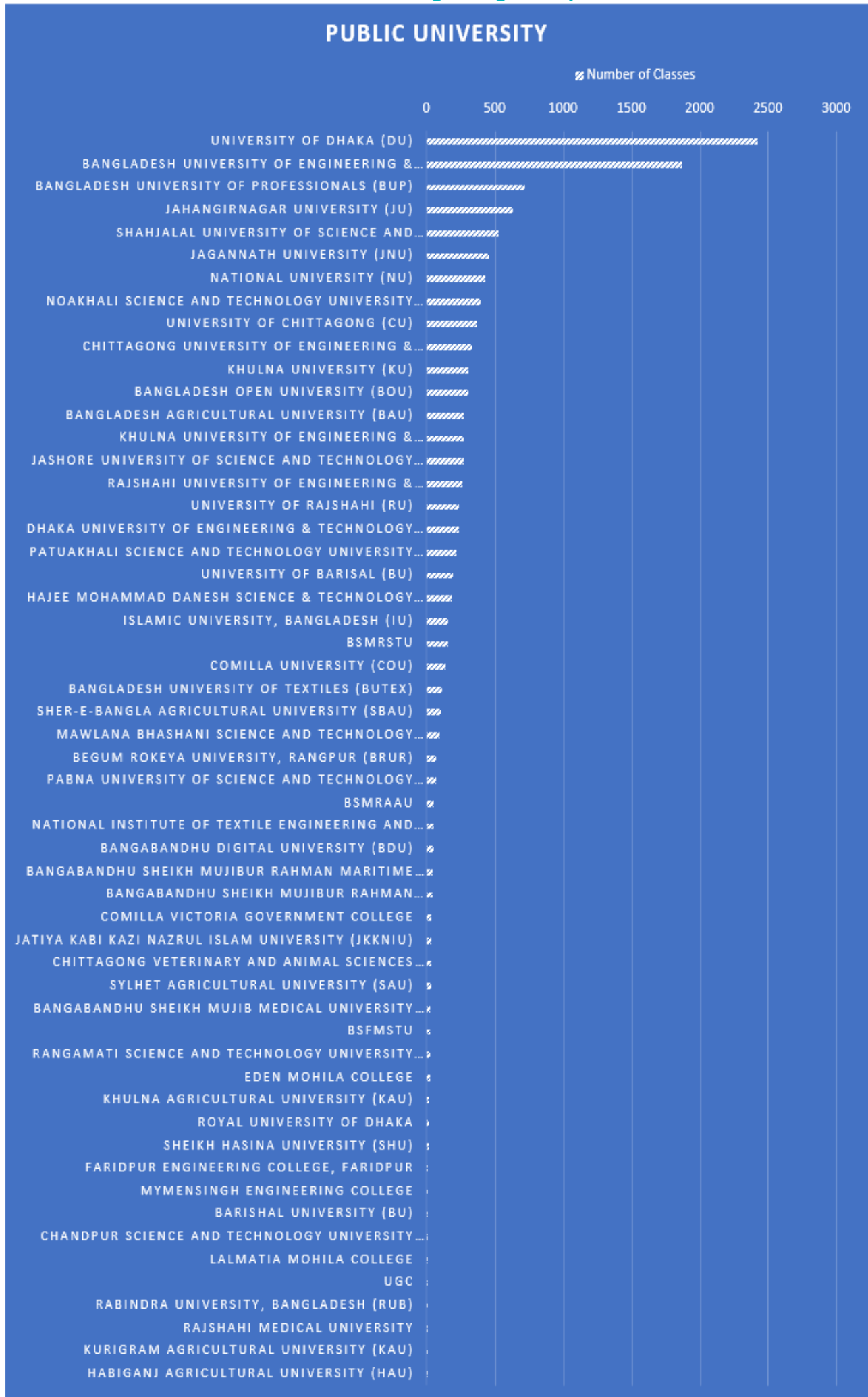


Figure 4: Public University Video Conferencing Usage Graph

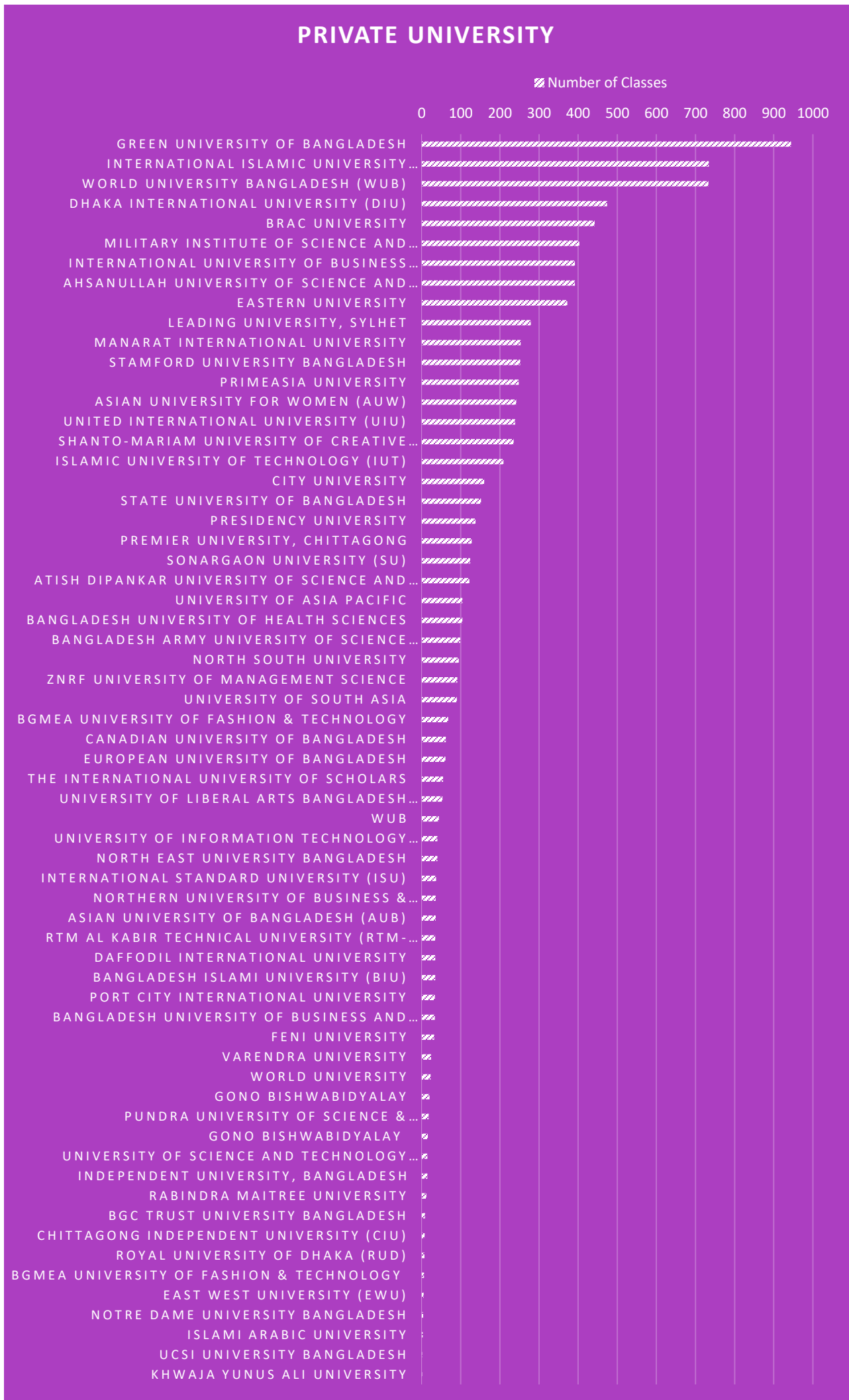


Figure 5: Private Universitys' Video Conferencing Usage Graph

## RESEARCH & OTHERS



Figure 6: Research Institute and Others Institutions' Video Conferencing Usage Graph

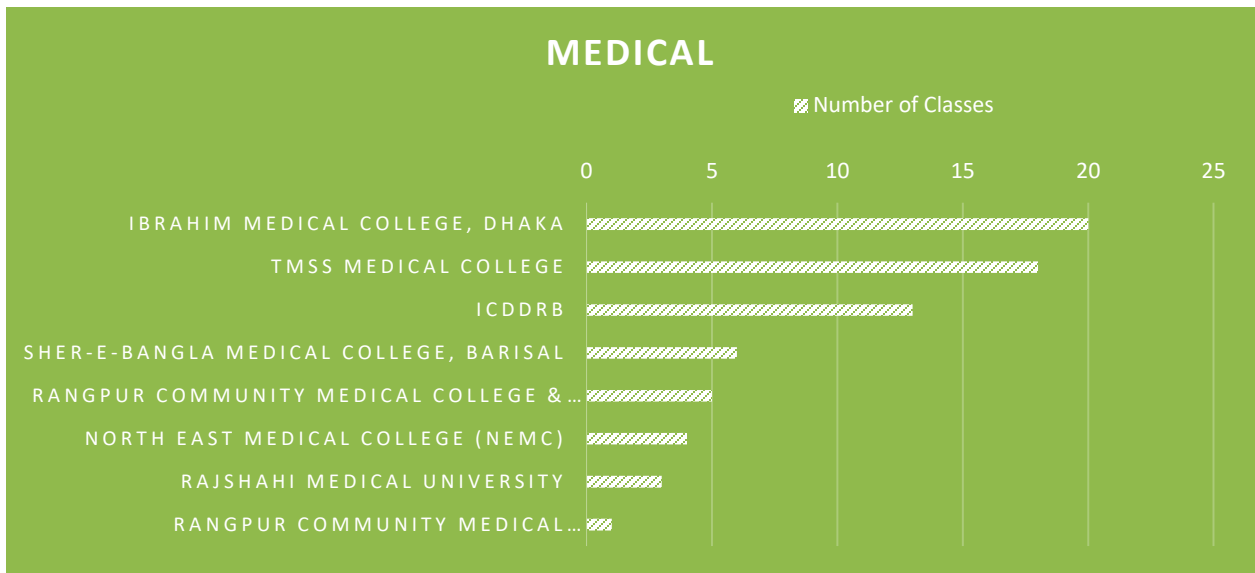


Figure 7: Medical Colleges' Video Conferencing Usage Graph

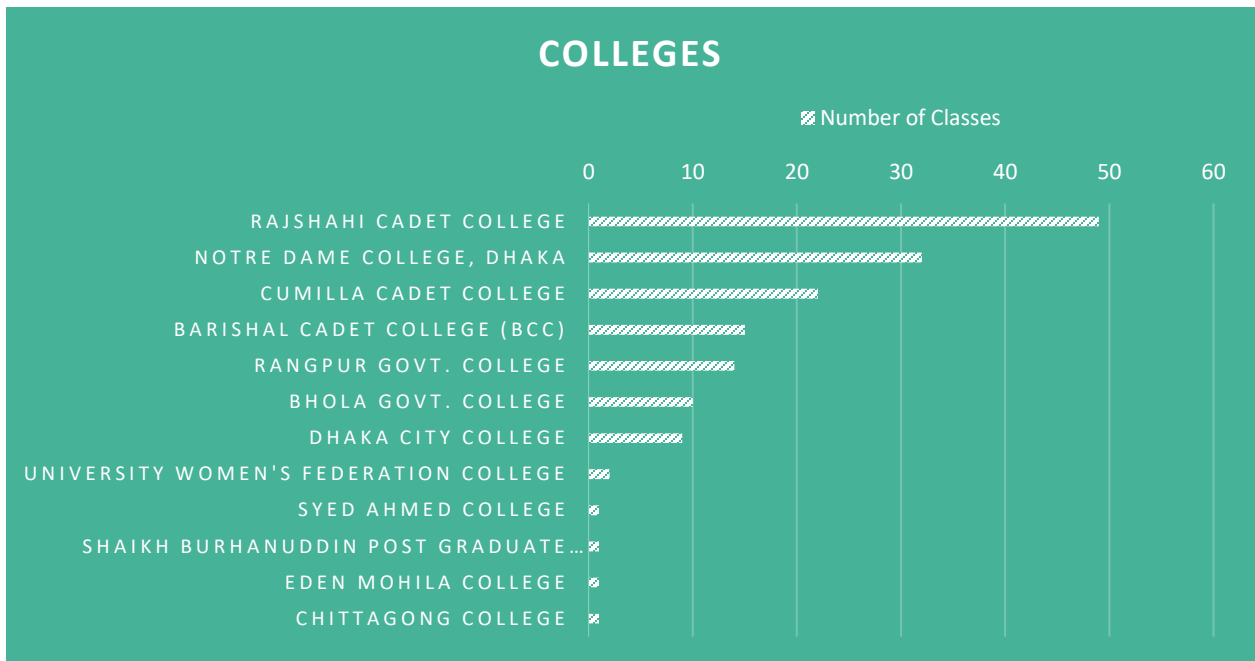


Figure 8: Colleges' Video Conferencing Usage Graph

## 6.4 BdREN Total Video Conferencing Usage Statistics

Table 15: BdREN Total Video Conferencing Usage Statistics

<b>Total Number of Meetings/Classes</b>	<b>24822</b>
<b>Total Hour of Meetings/Classes</b>	<b>29450</b>
<b>Total Number of Participants</b>	<b>867668</b>

## 6.5 Top Ten Institutions in Video Conferencing

Table 16: Top 10 Institutions in Video Conferencing

Name of The Institution	Total Classes	Total Hours (hr:mm:ss)	Total Participants
University of Dhaka (DU)	2429	2677:20:33	88224
Bangladesh University of Engineering & Technology (BUET)	1874	2071:54:57	39171
Green University of Bangladesh	944	1124:21:38	26954
International Islamic University Chittagong (IIUC)	734	750:01:18	24482
World University Bangladesh (WUB)	733	626:18:36	63272
Bangladesh University of Professionals (BUP)	721	987:36:25	38371
Jahangirnagar University (JU)	638	785:33:53	26533
Shahjalal University of Science and Technology (SUST)	528	528:10:10	12208
Dhaka International University (DIU)	474	424:27:45	15740
Jagannath University (JnU)	456	508:00:08	20261



## 6.6 Month-wise Number of Classes, Total Class Hours and Participants

Table 17: Month-wise Zoom Usage Statistics

Year: 1 Year	Number of Classes	Total Class Hours	Total Participants
March, 2023	23994	28191	909542
April, 2023	22420	24138	804011
May, 2023	25339	29979	934735
June, 2023	19,832	22426	687555
July, 2023	19,211	21730	677726
August, 2023	22,534	25651	783222
September, 2023	21,026	24200	712029
October,2023	27,630	31734	1027394
November, 2023	65,485	79026	3089515
December, 2023	33636	41065	1349804
January, 2024	29991	35185	1158627
February,2024	24822	29450	867668

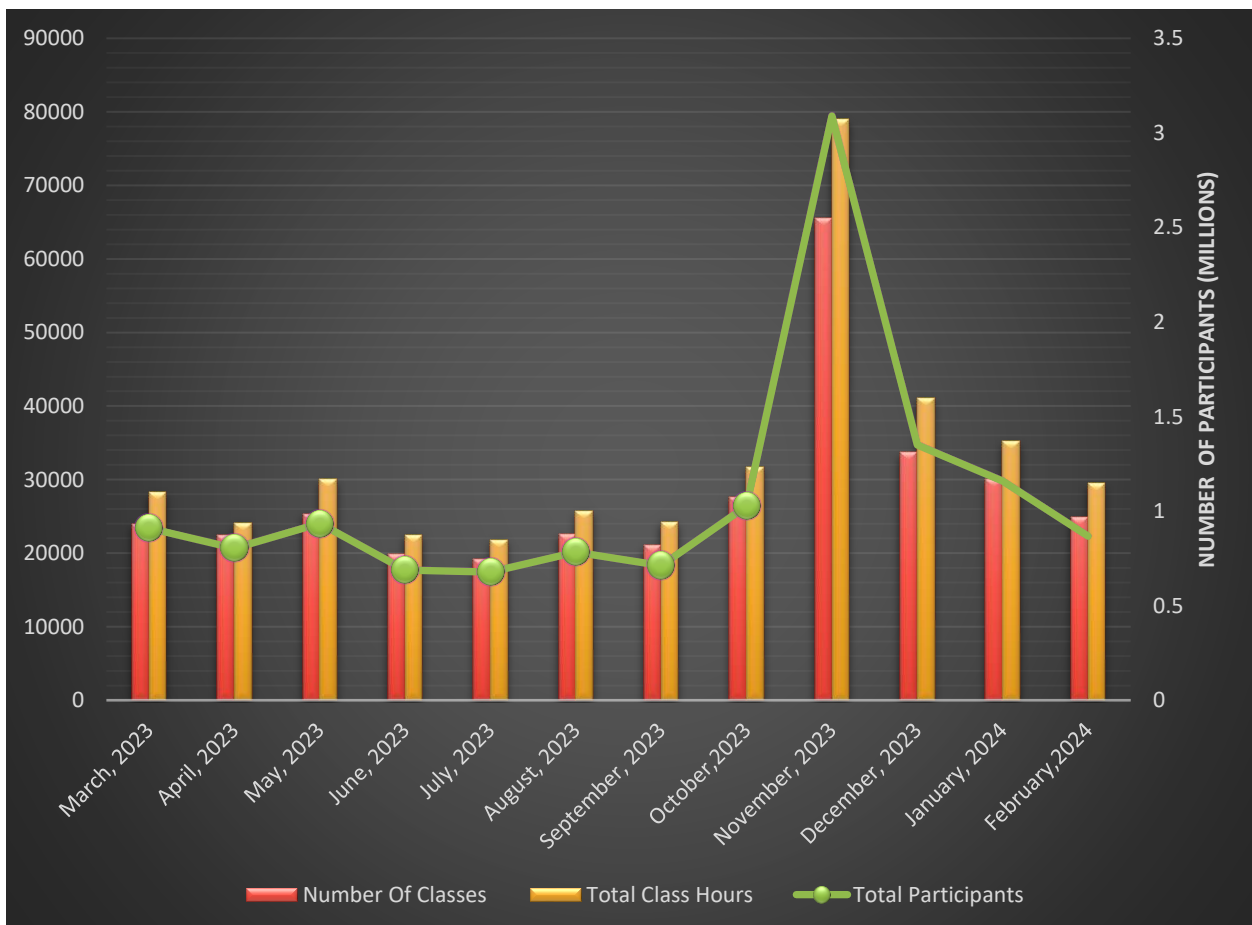


Figure 8: Month Wise Zoom Usage Graph in Last one year of 2023-2024

## 7. INSTITUTION WISE MAX HPC Allocation

Table 18: Institution Wise Max HPC Allocation

University	Numbers of VM	Memory (GB)	CPU (Core)	Provisioned Space (GB)
BARI	1	8	16	500
BAU	4	332	84	7344
BoU	2	42	32	1124
BRAC	1	8	2	300
BRUR	4	144	104	2710
BSMMU	6	152	90	4334
BSMRAAU	3	32	20	1324
BSMRAU	8	170	98	7232

BSMRSTU	1	8	4	1024
BU	4	106	80	4096
BUET	8	728	140	7294
BUP	10	148	68	5410
BUTex	4	230	144	2648
CSTU	1	8	16	1000
CUET	2	40	24	1224
CVASU	4	92	26	6644
DU	38	3002	1036	40268
DUET	4	64	64	4072
GU	1	128	32	1024
HAU	1	32	10	500
HSTU	2	96	32	5120
IAU	3	40	24	1500
IU	4	96	32	2124
IUS	1	4	4	200
IUT	1	8	2	200
JKKNIU	1	16	10	500
JnU	7	256	152	6620
JU	8	168	72	11664
JUST	14	336	240	9034
KU	4	192	82	7548
KUET	5	160	84	2824
KuriAU	1	8	4	500
MBSTU	17	748	470	13976
NBIU	2	16	32	1000
NIB	1	200	96	1024
NITER	1	8	4	1024
NSTU	4	80	42	3172
NU	2	12	16	300
PUST	3	128	48	2024
RU	6	136	52	18288
RUB	3	12	24	1324
RUET	4	66	38	1874
SAU	4	56	28	2648
SBAU	14	640	352	3250
SUST	6	104	32	6232
UGC	1	16	10	2048
World University	1	32	16	3072
<b>Grand Total</b>	<b>227</b>	<b>9108</b>	<b>4088</b>	<b>209162</b>

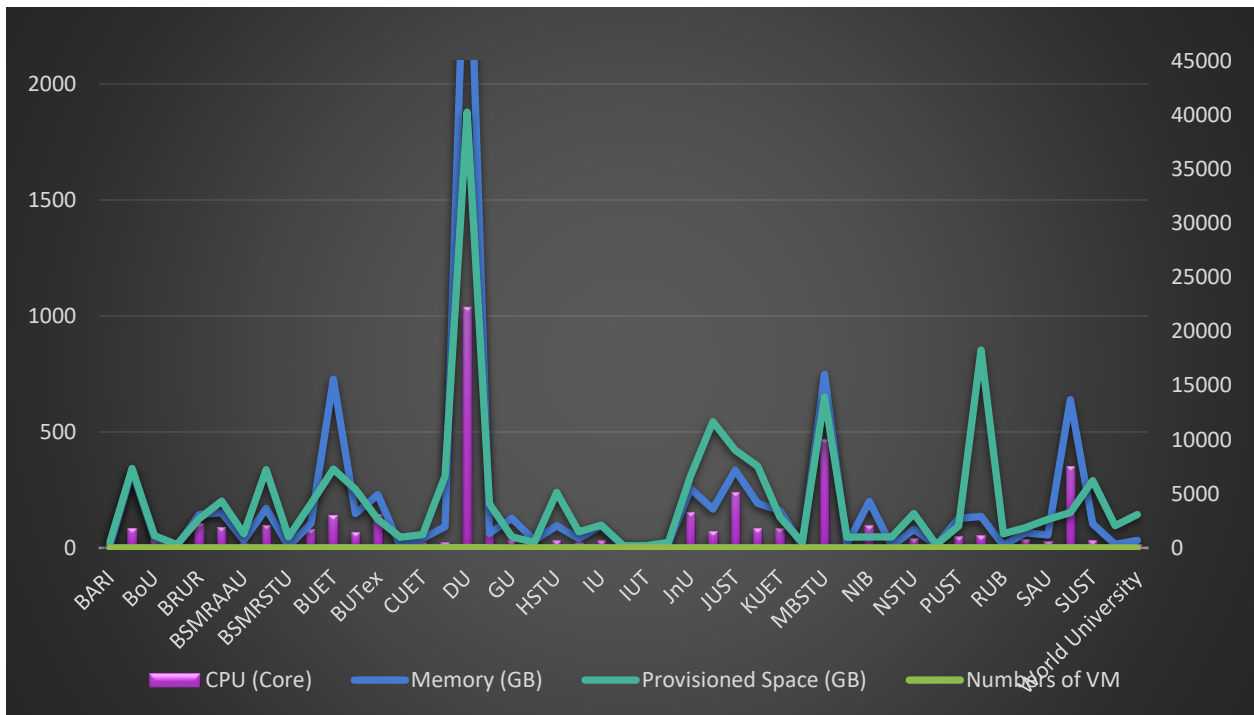


Figure 10: Institution Wise Max HPS Allocation

## 8. ACRONYMS

<b>AUB</b>	Asian University of Bangladesh	<b>KU</b>	Khulna University
<b>AUST</b>	Ahsanullah University of Science & Technology	<b>KUET</b>	Khulna University of Engineering & Technology
<b>AUW</b>	Asian University for Women	<b>LUS</b>	Leading University, Sylhet
<b>BARD</b>	Bangladesh Academy for Rural Development	<b>MBSTU</b>	Mawlana Bhashani Science and Technology University
<b>BARI</b>	Bangladesh Agricultural Research Institute	<b>MIU</b>	Manarat International University
<b>BAU</b>	Bangladesh Agricultural University	<b>MMC</b>	Mymensingh Medical College, Mymensingh
<b>BDU</b>	Bangabandhu Sheikh Mujibur Rahman Digital University	<b>NINMAS</b>	National Institute of Nuclear Medicine & Allied Science
<b>BDREN</b>	Bangladesh Research and Education Network	<b>NITER</b>	National Institute of Textile Engineering & Research
<b>BFRI</b>	Bangladesh Fisheries Research Institute	<b>NKN</b>	National Knowledge Network
<b>BIDS</b>	The Bangladesh Institute of Development Studies	<b>NOC</b>	Network Operation Center
<b>BLRI</b>	Bangladesh Livestock Research Institute	<b>NREN</b>	National Research and Education Network
<b>BOU</b>	Bangladesh Open University	<b>NSTU</b>	Noakhali Science and Technology University
<b>BRACU</b>	BRAC University	<b>NSU</b>	North South University
<b>BRRI</b>	Bangladesh Rice Research Institute	<b>NU</b>	National University
<b>BRUR</b>	Begum Rokeya University, Rangpur	<b>PSTU</b>	Patuakhali Science and Technology University
<b>BSMMU</b>	Bangabandhu Sheikh Mujib Medical University	<b>PUST</b>	Pabna University of Science and Technology
<b>BSMRAU</b>	Bangabandhu Sheikh Mujibur Rahman Agricultural University	<b>RAM</b>	Random Access Memory
<b>BSMRSTU</b>	Bangabandhu Sheikh Mujibur Rahman Science and Technology University	<b>RMC</b>	Rajshahi Medical College, Rajshahi
<b>BTCL</b>	Bangladesh Telecommunications Company Limited	<b>RU</b>	University of Rajshahi
<b>BU</b>	University of Barishal	<b>RUET</b>	Rajshahi University of Engineering & Technology
<b>BUBT</b>	Bangladesh University of Business and Technology	<b>SAU</b>	Sylhet Agricultural University
<b>BUET</b>	Bangladesh University of Engineering and Technology	<b>SBAU</b>	Sher-e-Bangla Agricultural University
<b>BUP</b>	Bangladesh University of Professionals	<b>SBMC</b>	Sher-e-Bangla Medical College, Barishal
<b>BUTEX</b>	Bangladesh University of Textiles	<b>SOMC</b>	Sylhet MAG Osmani Medical College, Sylhet
<b>CMC</b>	Chittagong Medical College, Chittagong	<b>SSHMC</b>	Shaheed Suhrawardy Medical College, Dhaka
<b>CoU</b>	Cumilla University	<b>SSKMC</b>	Sheikh Sayera Khatun Medical College, Gopalganj
<b>CU</b>	University of Chittagong	<b>SSMC</b>	Sir Salimullah Medical College, Dhaka
<b>CUET</b>	Chittagong University of Engineering and Technology	<b>SUST</b>	Shahjalal University of Science and Technology
<b>CVASU</b>	Chattogram Veterinary and Animal Sciences University	<b>TB</b>	Terabyte
<b>DDC</b>	Dhaka Dental College, Dhaka	<b>UGC</b>	University Grants Commission of Bangladesh
<b>DIU</b>	Daffodil International University	<b>VU</b>	Varendra University
<b>DMC</b>	Dhaka Medical College, Dhaka		
<b>DU</b>	University of Dhaka		
<b>DUET</b>	Dhaka University of Engineering and Technology		
<b>EU</b>	Eastern University		
<b>EWU</b>	East West University		
<b>HSTU</b>	Hajee Mohammad Danesh Science & Technology University		
<b>ICDDR'b</b>	International Centre for Diarrheal Disease Research, Bangladesh		
<b>ICMAB</b>	The Institute of Cost and Management Accountants of Bangladesh		
<b>ICSB</b>	The Institute of Chartered Secretaries of Bangladesh		
<b>IU</b>	Islamic University, Bangladesh		
<b>IUB</b>	Independent University, Bangladesh		
<b>IUBAT</b>	International University of Business Agriculture and Technology		
<b>IUT</b>	Islamic University of Technology		
<b>JKKNIU</b>	Jatiya Kabi Kazi Nazrul Islam University		
<b>JnU</b>	Jagannath University		
<b>JU</b>	Jahangirnagar University		
<b>JUST</b>	Jessore University of Science & Technology		

