

BANGLADESH RESEARCH AND EDUCATION NETWORK

NOC MONTHLY REPORT

April 2022

Prepared by
BdREN NOC



CONTENTS

1. COORDINATION ISSUES	1
2. LINK AVAILABILITY	1
3. MAJOR OUTAGE OF February 2022	5
4. TRAFFIC STATISTICS	5
5. TOTAL TRAFFIC	5
6. ONLINE EDUCATION	6
6.1 Institution Wise vSession Usage Statistics	6
➤ Public Universities and Colleges:	6
➤ Private Universities:	7
➤ Medical Colleges:	8
➤ Other Institution:	9
6.2 Institution Wise vSession Usage Graph	10
6.3 Institution Wise On-Prem Zoom Usage Statistics	12
6.4 BdREN Total Zoom Usage Statistics	15
6.5 Month-wise Number of Classes, Total Class Hours and Participants	15
7. INSTITUTION WISE MAX HPC USAGE	16
8. ACRONYMS	18

LIST OF TABLES

TABLE 1: INSTITUTION WISE LINK AVAILABILITY.....	1
TABLE 2: INSTITUTION WISE TRAFFIC STATISTICS.....	5
TABLE 3: TOTAL TRAFFIC	6
TABLE 4: vSESSION USAGE BY PUBLIC UNIVERSITIES AND COLLEGES	6
TABLE 5: vSESSION USAGE BY PRIVATE UNIVERSITY	7
TABLE 6: vSESSION USAGE BY MEDICAL COLLEGES	8
TABLE 7: vSESSION USAGE BY OTHER INSTITUTION	9
TABLE 8:INSTITUTION WISE ON-PREM ZOOM USAGE STATISTICS.....	12
TABLE 9: BdREN TOTAL ZOOM USAGE STATISTICS	15
TABLE 10: MONTH-WISE ZOOM USAGE STATISTICS.....	15
TABLE 11: INSTITUTION WISE MAX HPC USAGE	16

LIST OF FIGURES

FIGURE 1: INSTITUTION WISE LINK AVAILABILITY CONSIDERING “PLANNED MAINTENANCE” AS NON-OUTAGE	3
FIGURE 2: INSTITUTION WISE LINK AVAILABILITY CONSIDERING “PLANNED MAINTENANCE” AS OUTAGE.....	4
FIGURE 3: PUBLIC UNIVERSITY & COLLEGES vSESSION USAGE GRAPH.....	10
FIGURE 4: PRIVATE UNIVERSITY vSESSION USAGE GRAPH	11
FIGURE 5: MEDICAL COLLEGE vSESSION USAGE GRAPH	12
FIGURE 6: OTHER INSTITUTION vSESSION USAGE GRAPH.....	12
FIGURE 7: MONTH WISE ZOOM USAGE GRAPH IN LAST 1 YEAR	16
FIGURE 8: INSTITUTION WISE MAX HPS USAGE	17

1. COORDINATION ISSUES

Processed 470 mail updates between BdREN NOC and member institution.

2. LINK AVAILABILITY

Table 1: Institution Wise Link Availability

Name of Institutes	Outage (Minute)	Maintenance (Minute)	Availability (w/o Maintenance)	Availability (with Maintenance)
AUB			100.00%	100.00%
AUST			100.00%	100.00%
BARI			100.00%	100.00%
BAU			100.00%	100.00%
BDU (Dhaka)			100.00%	100.00%
BDU (Gazipur)			100.00%	100.00%
BFRI			100.00%	100.00%
BJRI			100.00%	100.00%
BLRI			100.00%	100.00%
BoU			100.00%	100.00%
BRAC			100.00%	100.00%
BRII			100.00%	100.00%
BRUR	89	89	99.80%	99.80%
BSMMU			100.00%	100.00%
BSMRAU			100.00%	100.00%
BSMRAAU			100.00%	100.00%
BSMRSTU	2087	2087	95.32%	95.32%
BU			100.00%	100.00%
BUBT			100.00%	100.00%
BUET			100.00%	100.00%
BUP	321	321	99.28%	99.28%
BUTex			100.00%	100.00%
CCN			100.00%	100.00%
CoU			100.00%	100.00%
CU			100.00%	100.00%
CUET			100.00%	100.00%
CVASU			100.00%	100.00%
DIU			100.00%	100.00%
DU			100.00%	100.00%
DUET			100.00%	100.00%
EU			100.00%	100.00%
EWU			100.00%	100.00%
HSTU			100.00%	100.00%
ICMAB			100.00%	100.00%
IU			100.00%	100.00%
IUB			100.00%	100.00%
IUBAT			100.00%	100.00%
IUT	241	241	99.46%	99.46%
JKKNIU			100.00%	100.00%

JnU			100.00%	100.00%
JU			100.00%	100.00%
JUST			100.00%	100.00%
KU			100.00%	100.00%
KUET			100.00%	100.00%
LUS	379	379	99.15%	99.15%
MBSTU			100.00%	100.00%
MIST	669	669	98.50%	98.50%
MIU			100.00%	100.00%
NINMAS			100.00%	100.00%
NSTU	2110	2181	95.27%	95.11%
NSU			100.00%	100.00%
NU			100.00%	100.00%
PSTU			100.00%	100.00%
PUST			100.00%	100.00%
RU			100.00%	100.00%
RUET			100.00%	100.00%
SAU			100.00%	100.00%
SBAU			100.00%	100.00%
SUST			100.00%	100.00%
VU			100.00%	100.00%

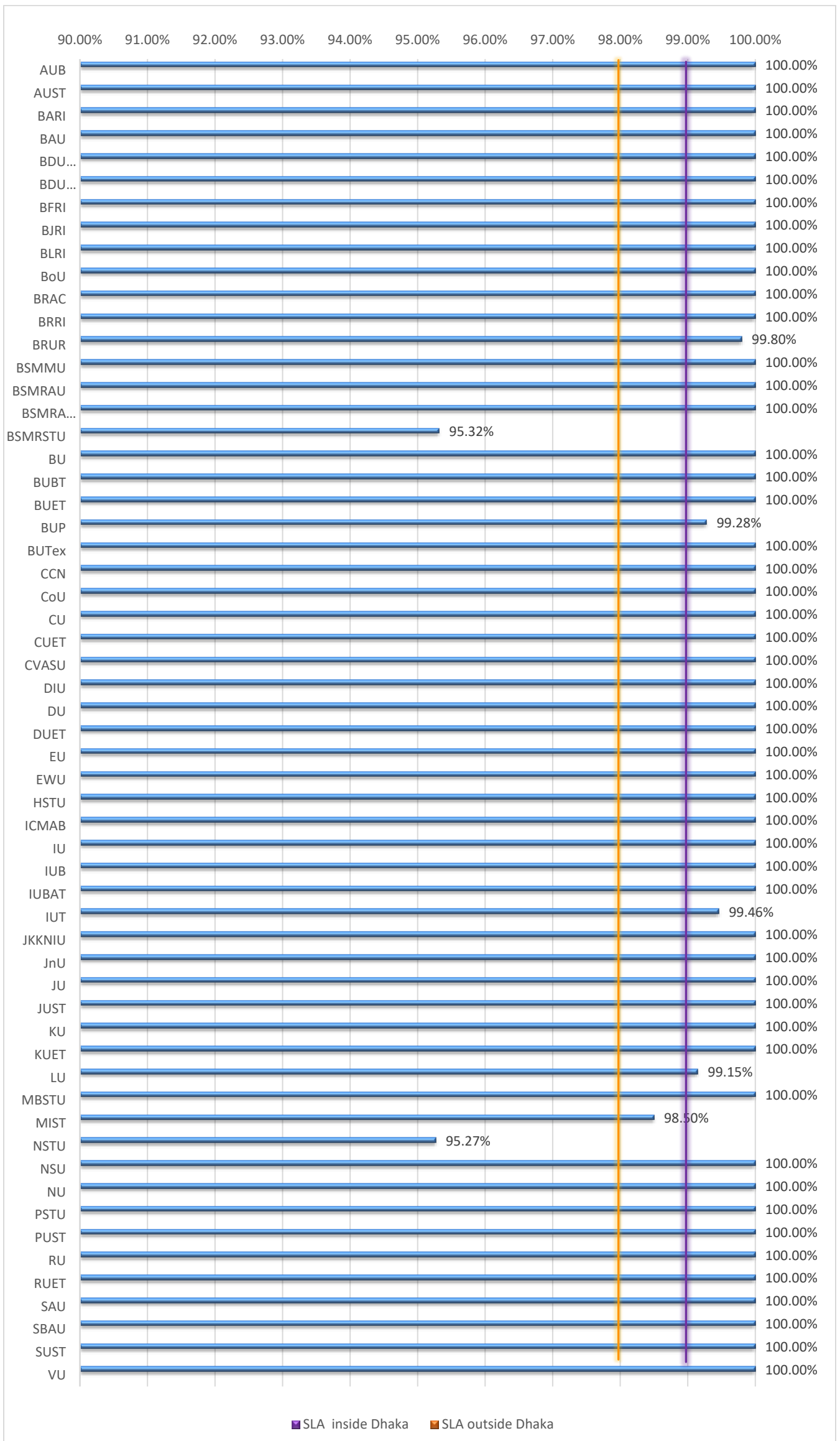


Figure 1: Institution Wise Link Availability considering “Planned Maintenance” as non-outage

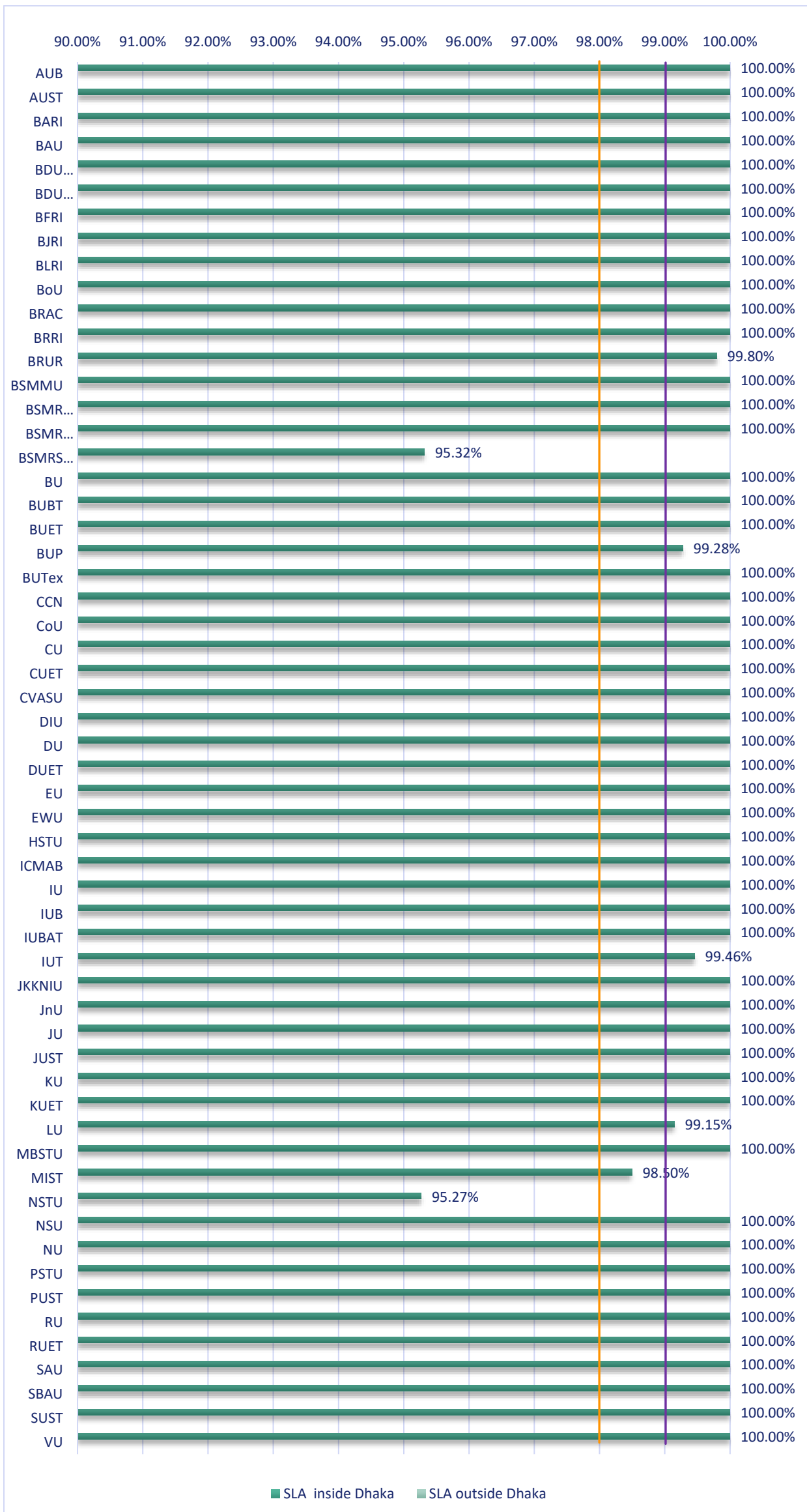


Figure 2: Institution Wise Link Availability considering “Planned Maintenance” as outage

3. MAJOR OUTAGE OF February 2022

❖ **Ticket#20220425001, Ticket#20220426001**

Affected Member : BSMRSTU
Recovery Time : 2087 min
SLA Compliance : Not Fulfilled
Problem Details : Due to the maintenance activity of Roads and Highway Department, Madaripur-PGCB to BSMRSTU link was down because of fiber break. Our team successfully restored the broken fiber.

❖ **Ticket#1504202200001**

Affected Member : NSTU
Recovery Time : 2110 min
SLA Compliance : Not Fulfilled
Problem Details : Mr Karzon from spectrum change the both power module in existing device. After that the device was up and running and also carrying traffic..

❖ **Ticket#2022040200001**

Affected Member : MIST
Recovery Time : 669 min
SLA Compliance : Not Fulfilled
Problem Details : MIST link was down due to fiber break at BUP gate. Our team successfully restored the link.

4. TRAFFIC STATISTICS

Table 2: Institution Wise Traffic Statistics

INSTITUTION	TOTAL TRAFFIC		AVERAGE BW		MAXIMUM BW	
	IN	OUT	IN	OUT	IN	OUT
BUET	366.79	69.73	850	150	1879	461
DIU	333.15	38.3	118.22	1030	400.66	1099
IU	299.77	19.93	559.14	37.93	955.48	103.97
DU	285.74	32.11	881.93	99.11	1590	305.56
RU	284.41	32.92	361.26	43.78	750.39	138.03
CU	225.83	26.86	328.75	35.69	610.89	106.59
CUET	224.69	23.37	671.13	76.34	1006	252.31
JU	178.87	15.47	244.81	21.48	554.54	68.81
DUET	169.21	14.72	283.06	27.65	602.84	110.69
BDU-Kaliakor	160.11	7.98	24.63	0.587	138.08	841.78
RUET	159.66	21.09	546.9	83.51	979.98	189.9
JUST	111.82	10.24	150.9	15.12	332.79	66.3
CVASU	106.52	7.97	179.77	17.48	364.86	89.72
BU	105.54	8.04	157.83	10.39	353.89	51.53
NSU	100.84	65.64	0.162	0.009	5.24	0.147
SBAU	96.06	9.37	153.64	16.41	427.17	58.08
BRUR	95.45	6.78	169.61	11.35	422.05	33.48
MBSTU	90.79	7.77	120.35	12.3	293.69	61.16
KUET	88.06	11.2	271.8	234.56	834.47	119.31
PSTU	87.01	9.2	503.18	53.82	1000	190.54
CoU	79.92	7.31	161.34	10.87	421.58	39.55
BSMMU	55.22	5.13	92.63	7.01	242.39	75.34
JnU	53.2	7.82	208.58	19.89	504.47	79.6
BAU	51.38	7.98	927.49	63.64	1550	159.25
JKKNIU	51.38	3.16	106.69	6.43	259.88	28.86
BSMRAU	49.94	3.19	249.14	13.17	427.32	45.55
BUP	49.38	5.86	153.27	18.18	503.75	70.24

INSTITUTION	TOTAL TRAFFIC		AVERAGE BW		MAXIMUM BW	
	IN	OUT	IN	OUT	IN	OUT
BUTex	46.48	3.88	88.16	9.07	247.74	114.98
BOU	41.66	18.1	102.38	38.21	283.69	71.53
NSTU	40.6	4.52	56.95	5.94	327.74	40.18
IUT	36.18	6.63	114.73	10.35	204.67	47.8
HSTU	26.22	0.48	35.7	1.87	127.61	15.08
SUST	22.32	2.58	174.23	5.72	418.9	20.66
PUST	19.58	1.38	72.75	5.78	156.51	24.9
NU	19.18	1.64	37.23	3.68	166.34	34.5
SAU	18.7	7.63	52.6	3.88	147.19	13.55
KU	17.38	1.62	98.15	8.78	335.28	31.15
BSMRSTU	15.61	1.31	102.37	7.43	240.37	39.71
IUBAT	12.11	3.65	4.64	1.26	25.13	4.79
EU	4.8	0.973	14.8	1.99	121.48	14.81
BFRI	2.14	0.128	6.61	0.71	27.68	3.22
BJRI	2.05	0.275	758.9	101.89	884.9	132.89
BUBT	1.7	0.11	5.23	0.343	63.55	4.37
BSMRAAU	1.55	0.15	4.8	0.464	52.55	6.79
AUST	1.43	0.161	4.41	0.497	45.65	30.51
IUB	0.567	0.98	0.0017	0.003	3.03	4.33
BLRI	0.0226	0.052	0.835	7.69	1.58	34.21
CCN	0.01545	0.000776	5.72	0.287	11.65	0.437
BRRI	0.0136	0.017	0.365	5.12	0.724	7.54
MIST	0.00312	0.03482	1.15	12.9	1.4	18.52
AUB	0.00287	0.041	1.06	15.26	1.28	19.12
LU	0.00165	0.000577	0.612	0.213	1.15	0.354
ICMAB	0.00148	0.02124	0.547	7.87	1.27	11.31
BDU-Dhaka	0.00121	0	0.446	0	0.872	0
BARI	0.000082	0.000548	0.002	0.0072	0.002	0.0072
BRAC	0	0	0	0	0	0
VU	0	0	0	0	0	0
EWU	0	0	0	0	0	0

5. TOTAL TRAFFIC

Table 3: Total Traffic

Total Download	4291.059 TB
Total Upload	535.505 TB

6. ONLINE EDUCATION

6.1 Institution Wise vSession Usage Statistics

➤ Public Universities and Colleges:

Table 4: vSession Usage by Public Universities and Colleges

SL	University_name	Total Class Taken	Total Hours	Total Participants
1	Jahangirnagar University (JU)	1101	1301:42:03	48839
2	University of Dhaka (DU)	963	1115:46:02	52914
3	Jagannath University (JnU)	682	816:35:04	31603
4	Noakhali Science and Technology University (NSTU)	581	594:24:57	27932
5	University of Chittagong (CU)	488	540:53:59	20934
6	University of Rajshahi (RU)	431	447:47:02	9239
7	Bangladesh Agricultural University (BAU)	410	450:19:59	20586
8	Eden Mohila College	398	354:50:02	26258

9	Comilla University (CoU)	391	434:54:03	15224
10	Bangladesh University of Textiles (BUTEX)	388	363:06:03	25488
11	Hajee Mohammad Danesh Science & Technology University (HSTU)	295	289:10:03	16440
12	Jashore University of Science and Technology (JUST)	275	277:55:00	6265
13	Mawlana Bhashani Science and Technology University (MBSTU)	240	264:04:58	8950
14	Khulna University (KU)	228	240:45:00	6973
15	Begum Rokeya University, Rangpur (BRUR)	220	248:40:00	11015
16	Bangladesh Open University (BOU)	201	253:59:01	5359
17	BSMRSTU	189	206:46:02	11037
18	Islamic University, Bangladesh (IU)	156	196:25:59	6155
19	Islamic University of Technology (IUT)	136	137:46:00	2047
20	Jatiya Kabi Kazi Nazrul Islam University (JKKNIU)	134	154:05:00	6606
21	University of Barisal (BU)	96	107:33:58	4235
22	Lalmatia Mohila College	78	83:14:01	934
23	National Institute of Textile Engineering and Research (NITER)	78	69:54:01	1355
24	Bangabandhu Sheikh Mujibur Rahman Maritime University	76	99:27:59	2608
25	Bangladesh University of Engineering & Technology (BUET)	71	107:50:59	3650
26	Sher-e-Bangla Agricultural University (SBAU)	66	68:43:00	2292
27	Khulna Agricultural University (KAU)	59	66:24:00	2396
28	Patuakhali Science and Technology University (PSTU)	58	58:37:02	2815
29	Bangabandhu Sheikh Mujib Medical University (BSMMU)	57	86:53:00	2211
30	Pabna University of Science and Technology (PUST)	57	73:45:59	2301
31	Bangladesh University of Professionals (BUP)	54	47:35:00	2548
32	Chittagong Veterinary and Animal Sciences University (CVASU)	52	74:07:00	3508
33	Shahjalal University of Science and Technology (SUST)	51	60:32:00	2422
34	National University (NU)	44	71:54:59	1625
35	Dhaka University of Engineering & Technology (DUET)	44	35:11:00	1357
36	Bangabandhu Sheikh Mujibur Rahman Agricultural University	33	24:35:01	506
37	BSFMSTU	30	28:47:01	828
38	Military Institute of Science and Technology (MIST)	27	44:17:00	892
39	Comilla Victoria Government College	24	19:21:00	240
40	Sylhet Agricultural University (SAU)	23	23:24:59	1003
41	Khulna University of Engineering & Technology (KUET)	21	29:56:00	607
42	Chittagong University of Engineering & Technology (CUET)	19	16:30:00	210
43	Rabindra University, Bangladesh (RUB)	18	15:27:00	323
44	Mymensingh Engineering College	17	16:33:01	773
45	Rajshahi University of Engineering & Technology (RUET)	14	16:52:00	223
46	Rangamati Science and Technology University (RMSTU)	9	8:58:00	177
47	Sheikh Hasina University (SHU)	7	10:45:00	282
48	Textile Engineering College, Chattogram (TEC)	7	8:18:00	268
49	BSMRAAU	6	7:19:00	64
50	Faridpur Engineering College, Faridpur	5	2:30:00	110
51	Shahid Abdur Rab Serniabat Textile Engineering College (SARSTEC)	4	3:41:00	204
52	Bangabandhu Digital University (BDU)	3	1:31:00	26
53	Sheikh Kamal Textile Engineering College, Jhenaidah (SKTEC)	2	1:11:00	102

➤ **Private Universities:**

Table 5: vSession Usage by Private University

SL	Institution Name	Total Class	Total Hours	Total Participants
1	Green University of Bangladesh	3234	3456:17:01	107022
2	Stamford University Bangladesh	2104	2413:11:00	57780
3	Shanto-Mariam University of Creative Technology	1201	1393:33:59	36767
4	International Islamic University Chittagong (IIUC)	771	794:21:58	22180
5	Primeasia University	700	1151:24:58	24059
6	Eastern University	675	729:57:59	18957
7	BRAC University	410	483:34:58	21699
8	Premier University, Chittagong	397	401:38:55	22290

SL	Institution Name	Total Class	Total Hours	Total Participants
9	City University	377	413:54:59	13048
10	University of Asia Pacific	374	487:21:59	13946
11	Bangladesh Army International University of Science and Tech	367	400:44:01	9393
12	Leading University, Sylhet	317	330:47:01	6004
13	Ahsanullah University of Science and Technology (AUST)	284	306:33:00	6972
14	Manarat International University	245	301:38:01	10228
15	Southeast University	218	268:06:00	9086
16	Dhaka International University (DIU)	215	226:32:01	5860
17	Presidency University	209	229:41:00	4927
18	Northern University of Business & Technology Khulna	182	205:35:02	3763
19	Bangladesh University of Health Sciences	181	227:42:59	4821
20	University of South Asia	175	212:30:00	8670
21	North Western University (Khulna)	164	137:03:00	1931
22	Canadian University of Bangladesh	155	140:18:02	3394
23	State University of Bangladesh	150	211:23:01	5055
24	University of Science and Technology Chittagong (USTC)	121	112:18:59	2185
25	Bangladesh Army University of Science and Technology (BAUST)	105	105:48:02	1841
26	Sonargaon University (SU)	97	84:07:59	4013
27	Port City International University	86	69:34:00	1071
28	Asian University of Bangladesh (AUB)	84	79:39:00	1388
29	Gono Bishwabidyalay	76	80:03:00	3554
30	Atish Dipankar University of Science and Technology	66	73:22:00	1621
31	European University of Bangladesh	61	73:19:00	1621
32	Bangladesh International School & College (BISC)	61	96:22:01	440
33	Daffodil International University	55	55:03:01	1736
34	CCN University of Science & Technology, Cumilla	53	47:52:59	987
35	BGC Trust University Bangladesh	52	62:39:59	1245
36	International University of Business Agriculture and Technology	52	71:58:00	1290
37	University of Liberal Arts Bangladesh (ULAB)	50	65:04:00	2167
38	Feni University	49	50:30:00	1501
39	University of Information Technology and Sciences (UITS)	46	49:44:00	1129
40	BGMEA University of Fashion & Technology	37	39:24:00	851
41	International Standard University (ISU)	37	52:27:00	1088
42	Prime University	35	28:41:00	553
43	United International University (UIU)	35	45:45:00	1204
44	North South University	34	47:04:00	566
45	The International University of Scholars	31	23:29:00	706
46	Pundra University of Science & Technology	29	31:20:00	206
47	Znrf University of Management science	25	39:07:59	365
48	Notre Dame University Bangladesh	25	15:20:00	311
49	Fareast International University (FIU)	25	22:51:00	322
50	Bangladesh Army University of Engineering and Technology	22	21:02:00	211
51	Adamjee Cantonment College	20	18:35:01	241
52	North East University Bangladesh	15	10:33:00	177
53	East Delta University	12	12:26:00	288
54	Rabindra Maitree University	11	9:48:00	153
55	Bangladesh University	8	11:10:00	26
56	Savar Cantonment Public School & College (SCPSC)	8	7:21:00	17
57	Bangladesh Islami University (BIU)	7	6:15:00	79
58	Chittagong Independent University (CIU)	6	6:44:00	184
59	Varendra University	6	4:01:00	68
60	ASA University Bangladesh	4	4:55:00	37
61	East West University (EWU)	3	2:53:00	48
62	Rajshahi Cantonment Public School and College (RCPC)	2	0:22:00	4

➤ **Medical Colleges:**

Table 6: vSession Usage by Medical Colleges

SL	Institution Name	Total Class	Total Hours	Total Participants
1	Dhaka Medical College	20	25:30:00	342

2	TMSS Medical College	15	21:54:00	1200
3	Ibrahim Medical College, Dhaka	12	17:10:00	252
4	MAG Osmani Medical College, Sylhet	2	2:55:00	13
5	Faridpur Medical College	2	2:32:00	362

➤ **Other Institution:**

Table 7: vSession Usage by Other Institution

SL	Institution Name	Total Class	Total Hours	Total Participants
1	Bangladesh Institute of Capital Market (BICM)	70	146:42:59	1810
2	Bangladesh Institute of Management (BIM)	56	90:09:00	1383
3	Institute of Chartered Secretaries of Bangladesh (ICSB)	51	111:15:59	2210
4	Shaikh Burhanuddin Post Graduate College	19	25:29:00	121
5	Sylhet Engineering College (SEC)	19	29:36:00	745
6	Government Organization	18	25:16:00	1090
7	Ministry of Education	7	11:20:00	1873
8	BANBEIS	5	14:09:00	83
9	Technical Teachers' Training College	4	6:56:00	676
10	Bangladesh Association of Women Scientist (BAWS)	2	2:40:00	55
11	Bangabangdhu Textile Engineering College	1	0:47:00	35
12	Bangladesh Research and Education Network (BdREN)	1	1:05:00	1

6.2 Institution Wise vSession Usage Graph

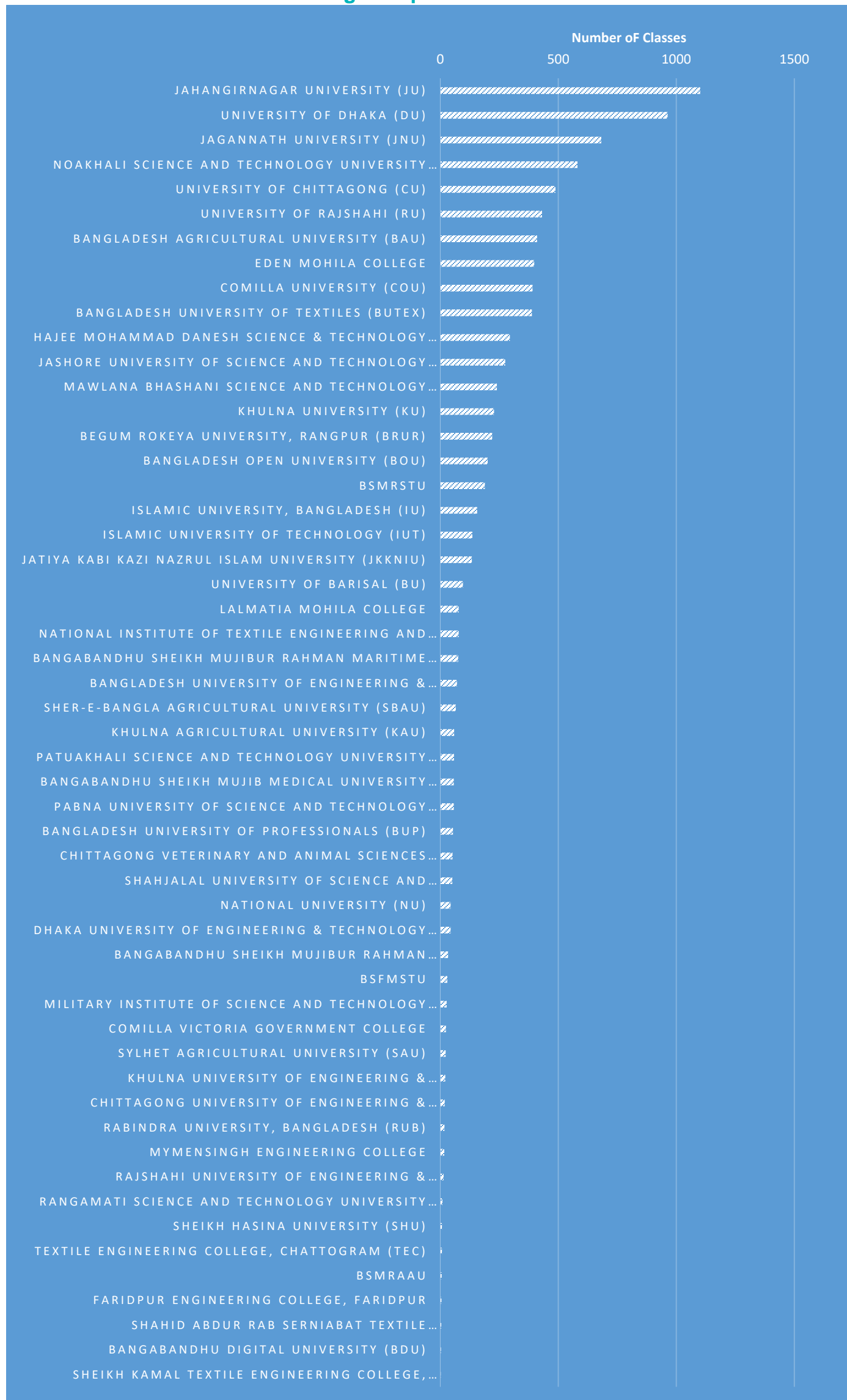


Figure 3: Public University & Colleges vSession Usage Graph

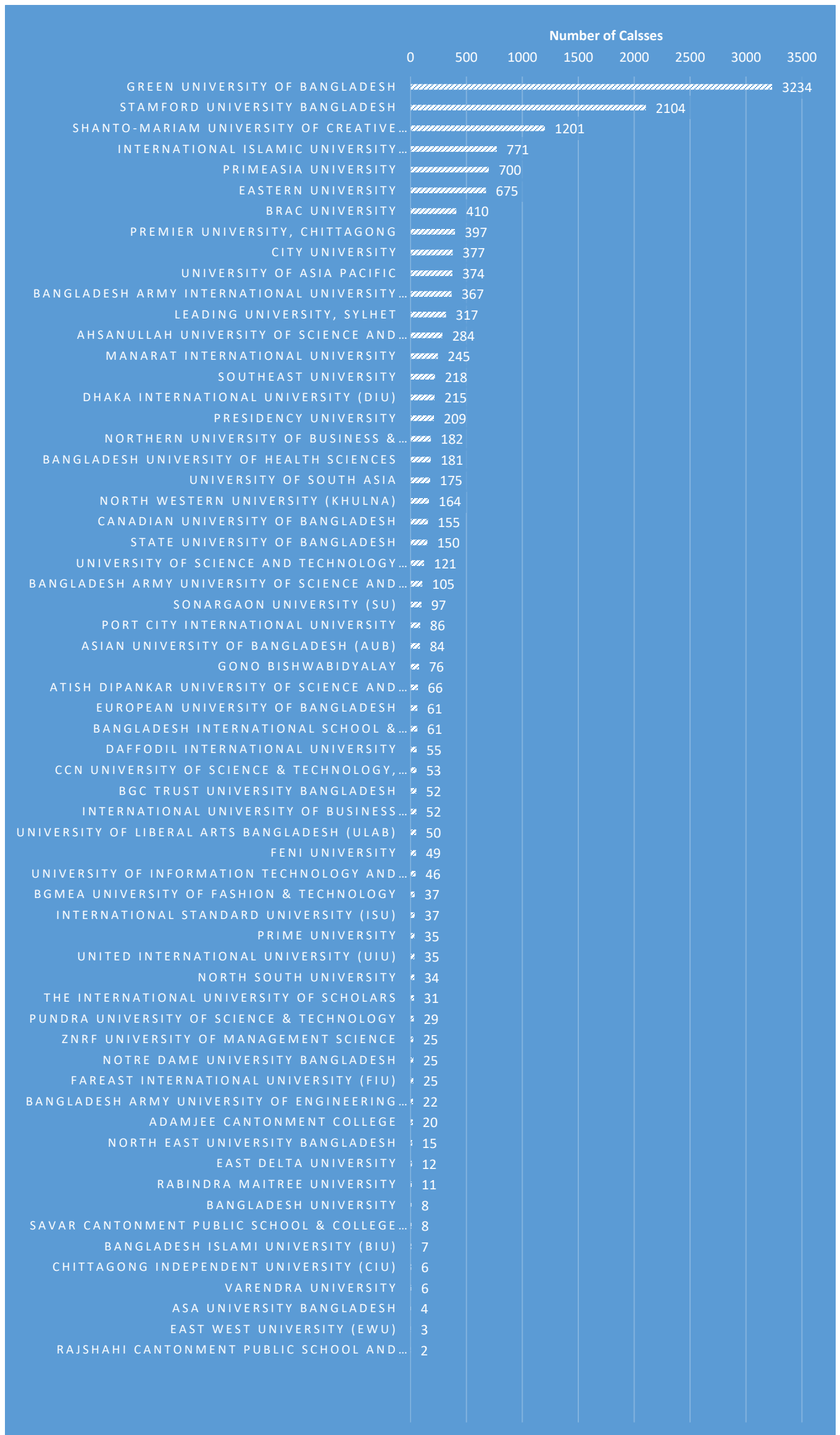


Figure 4: Private University vSession Usage Graph

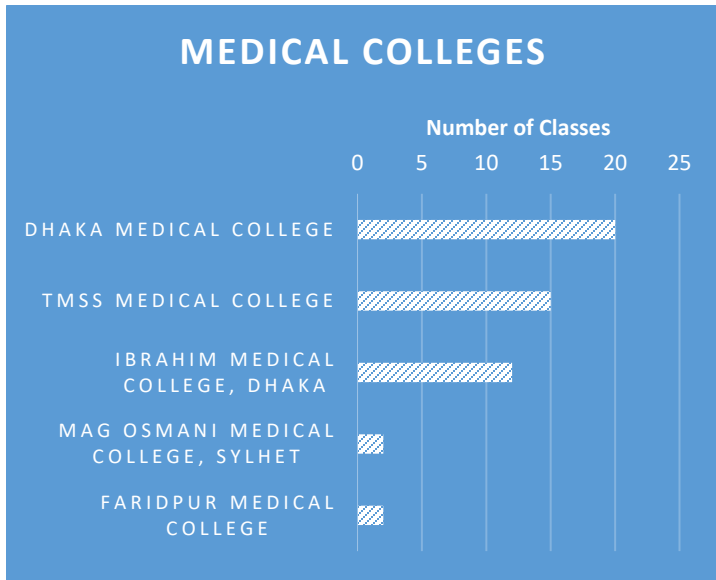


Figure 5: Medical College vSession Usage Graph

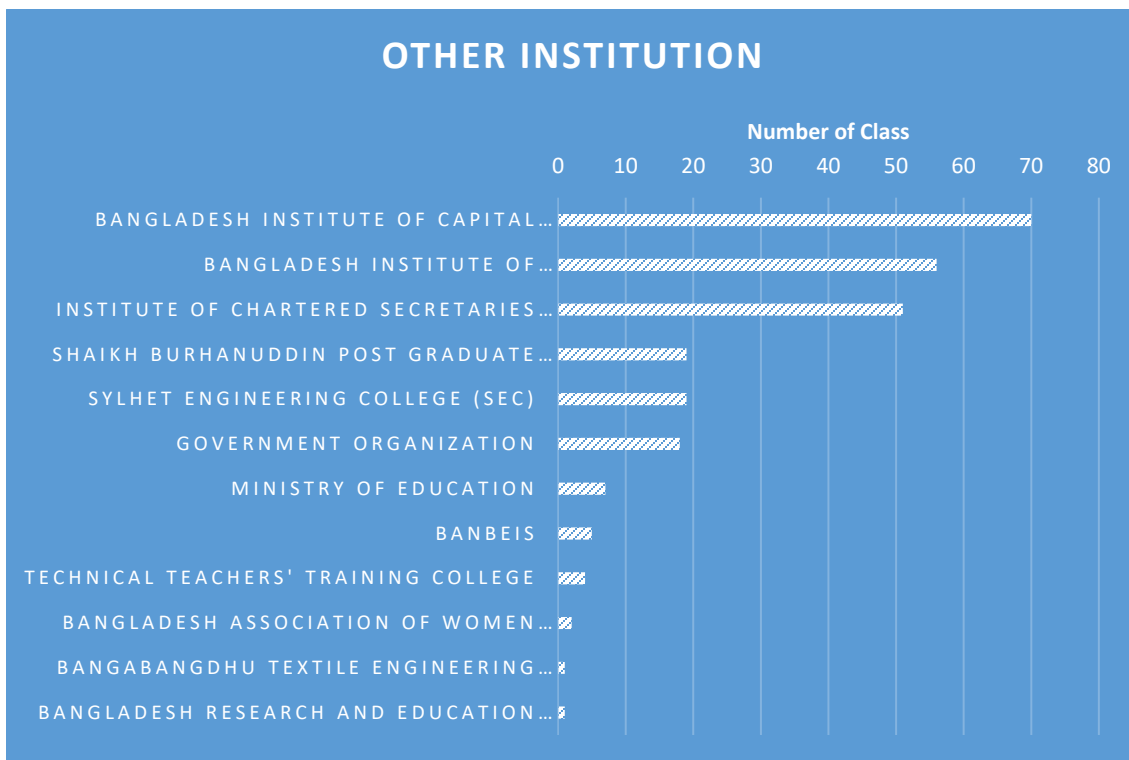


Figure 6: Other Institution vSession Usage Graph

6.3 Institution Wise On-Prem Zoom Usage Statistics

Table 8: Institution Wise On-Prem Zoom Usage Statistics

Sl.	Name of The Institution	Number of Class	Sum of Duration (hh:mm:ss)	Sum of Participants
1	University of Dhaka (DU)	4213	4888:30:52	183747
2	Bangladesh University of Engineering & Technology (BUET)	2073	2295:14:29	44768
3	Others	905	1077:47:55	25040
4	United International University (UIU)	514	650:51:28	10808
5	Shahjalal University of Science and Technology (SUST)	444	464:42:10	10414
6	Bangladesh University of Professionals (BUP)	405	502:49:58	14556
7	Rajshahi University of Engineering & Technology (RUET)	399	372:17:10	6048
8	Khulna University of Engineering & Technology (KUET)	386	357:46:28	5328
9	National University (NU)	371	1031:59:19	28634
10	Khulna University (KU)	351	402:40:45	10620
11	Bangladesh Agricultural University (BAU)	348	417:06:21	40438
12	Chittagong University of Engineering & Technology (CUET)	321	339:16:46	6795

Sl.	Name of The Institution	Number of Class	Sum of Duration (hh:mm:ss)	Sum of Participants
13	Dhaka University of Engineering & Technology (DUET)	311	343:27:03	8274
14	Military Institute of Science and Technology (MIST)	311	326:22:50	9828
15	Jahangirnagar University (JU)	298	321:58:02	10729
16	Noakhali Science and Technology University (NSTU)	276	291:42:35	11706
17	BRAC University	250	279:16:12	6596
18	Jashore University of Science and Technology (JUST)	236	243:59:02	7072
19	University of Chittagong (CU)	221	239:50:24	6718
20	ICMAB	176	252:37:19	10144
21	Islamic University of Technology (IUT)	170	165:52:58	1201
22	Bangabandhu Sheikh Mujibur Rahman Agricultural University	116	143:13:52	5481
23	Jagannath University (JnU)	103	122:00:54	1732
24	Pabna University of Science and Technology (PUST)	91	86:06:17	3625
25	Patuakhali Science and Technology University (PSTU)	84	95:27:58	3678
26	Stamford University Bangladesh	80	97:03:39	2156
27	University of Rajshahi (RU)	79	93:35:46	2184
28	SPFMS	67	101:36:27	1340
29	Mawlana Bhashani Science and Technology University (MBSTU)	66	66:58:24	2360
30	Canadian University of Bangladesh	64	89:04:35	2415
31	Bangladesh Open University (BOU)	61	72:01:29	1638
32	Notre Dame College, Dhaka	61	63:39:13	1387
33	Sylhet Agricultural University (SAU)	58	57:07:40	1719
34	Spectrum Engineering Consortium Limited	55	70:07:02	316
35	Bangladesh International School & College (BISC)	54	59:06:17	472
36	Green University of Bangladesh	54	63:15:15	1185
37	BSMRAAU	51	59:51:41	469
38	BdREN	50	48:11:29	1741
39	Bangabandhu Sheikh Mujibur Rahman Maritime University	48	57:11:50	1095
40	BSMRSTU	45	65:33:13	471
41	University of Barisal (BU)	44	47:09:13	1604
42	Comilla University (CoU)	42	41:48:05	1671
43	Hajee Mohammad Danesh Science & Technology University (HSTU)	42	37:27:14	1941
44	Data Edge	41	62:19:24	476
45	Manarat International University	40	43:05:16	1644
46	Begum Rokeya University, Rangpur (BRUR)	39	38:39:15	1479
47	RTM Al Kabir Technical University (RTM-AKTU)	37	31:06:04	351
48	International Islamic University Chittagong (IIUC)	36	49:56:07	790
49	Daffodil International University	33	58:15:35	5938
50	NIPORT	33	50:41:00	5603
51	North Western University (Khulna)	31	27:52:42	381
52	Ministry of Education	29	43:41:34	874
53	Bangladesh University of Textiles (BUTEX)	26	23:34:21	2345
54	Primeasia University	26	29:43:41	484
55	Premier University, Chittagong	25	28:30:20	1784
56	ICDDRDB	24	24:31:47	998
57	UGC	24	25:22:49	453
58	Bangladesh Agricultural Research Institute (BARI)	23	27:10:02	176

Sl.	Name of The Institution	Number of Class	Sum of Duration (hh:mm:ss)	Sum of Participants
59	University of Liberal Arts Bangladesh (ULAB)	22	25:11:22	544
60	Bangladesh University of Business and Technology (BUBT)	21	19:46:24	1179
61	Dhaka International University (DIU)	21	23:20:29	400
62	East West University (EWU)	21	28:49:39	360
63	University of Asia Pacific	21	27:09:53	779
64	Bangladesh Institute of Development Studies	20	30:05:59	623
65	IEDCR	18	20:44:12	155
66	Bangladesh Sugar & Food Industries Corporation (BSFIC)	17	22:11:50	271
67	BGC Trust University Bangladesh	17	19:22:41	170
68	Chittagong Veterinary and Animal Sciences University (CVASU)	16	25:31:58	500
69	fDLuDCf	16	44:26:06	1392
70	Institute of Chartered Secretaries of Bangladesh (ICSB)	16	16:40:52	150
71	Jatiya Kabi Kazi Nazrul Islam University (JKKNIU)	16	17:14:47	394
72	Sher-e-Bangla Agricultural University (SBAU)	16	22:12:47	837
73	BTCL	15	20:03:17	211
74	International University of Business Agriculture and Technology	15	10:19:12	348
75	North South University	15	15:49:45	141
76	Textile Engineering College, Noakhali	15	14:14:23	906
77	Bangladesh Rice Research Institute (BRRI)	13	17:13:57	736
78	Bangladesh University of Health Sciences – BUHS	13	21:49:56	128
79	ic4rib	13	10:50:15	47
80	Ahsanullah University of Science and Technology (AUST)	12	16:39:27	421
81	Independent University, Bangladesh	12	12:50:22	2117
82	Govt. Office	11	12:36:40	687
83	Faridpur Engineering College, Faridpur	10	9:45:43	244
84	Customs Intelligence & Investigation Directorate	9	27:50:03	239
85	EXIM Bank Agricultural University Bangladesh	9	9:02:28	123
86	Bangabandhu Digital University (BDU)	8	4:45:29	254
87	BARD	8	5:56:12	64
88	Barishal Cadet College (BCC)	8	7:55:05	20
89	BIGM	8	24:15:05	282
90	Chittagong Independent University (CIU)	8	8:21:16	192
91	Eastern University	8	7:12:21	51
92	The People's University of Bangladesh	8	8:10:44	91
93	Asian University of Bangladesh (AUB)	7	4:52:45	35
94	BAC	7	10:56:06	140
95	Bangladesh Army University of Science and Technology (BAUST)	7	4:05:22	61
96	BPC Training Center	7	8:26:11	65
97	City University	7	12:59:17	64
98	International Standard University (ISU)	7	10:32:49	225
99	Bangabandhu Sheikh Mujib Medical University (BSMMU)	6	3:58:06	55
100	Eden Mohila College	6	10:02:14	247
101	Express Systems Limited	6	4:38:43	75
102	Rajshahi Medical University	6	4:55:47	151
103	Bangladesh Securities & Exchange Commission (BSEC)	5	7:04:22	213
104	Presidency University	5	5:03:10	10

Sl.	Name of The Institution	Number of Class	Sum of Duration (hh:mm:ss)	Sum of Participants
105	Bangladesh Institute of Capital Market (BICM)	4	7:13:25	64
106	BGMEA University of Fashion & Technology	4	6:12:55	56
107	Fareast International University (FIU)	4	4:38:07	96
108	Rangamati Science and Technology University (RMSTU)	4	5:42:18	51
109	Bangladesh Fisheries Research Institute (BFRI)	3	0:56:54	24
110	BSFMSTU	3	3:16:52	95
111	Port City international University	3	2:24:31	9
112	Shaikh Burhanuddin Post Graduate College	3	4:34:23	73
113	Sonargaon University (SU)	3	2:45:25	130
114	University of Science and Technology Chittagong (USTC)	3	1:18:22	10
115	Varendra University	3	4:03:35	12
116	BJRI	2	2:40:52	28
117	Dhaka Medical College	2	1:54:14	42
118	Faith Bangladesh	2	2:46:51	9
119	Gono Bishwabidyalay	2	2:32:52	27
120	Kazla Technologies Limited	2	0:14:27	5
121	NIPSOM	2	5:35:21	73
122	Ranada Prasad Shaha University (RPSU)	2	1:31:26	18
123	SOMC	2	4:19:59	17
124	Bangladesh Computer Council (BCC)	1	1:14:38	14
125	Bangladesh Institute of Management (BIM)	1	0:36:22	2
126	Chittagong Medical College	1	3:46:41	184
127	Joypurhat Girls Cadet College	1	0:17:56	2
128	Leading University, Sylhet	1	0:33:50	7
129	Local Government Engineering Department(LGED)	1	0:54:58	8
130	MH Samorita Medical College	1	1:08:39	13
131	NATA	1	1:38:19	6
132	Rajshahi Cadet College	1	1:09:01	472
133	Rajshahi Cantonment Public School and College (RCPSC)	1	1:09:27	2
134	Savar Cantonment Public School & College (SCPSC)	1	0:10:59	2
135	Sheikh Hasina University (SHU)	1	1:08:26	42
136	Sher-e-Bangla Medical College, Barisal	1	0:40:00	2

6.4 BdREN Total Zoom Usage Statistics

Table 9: BdREN Total Zoom Usage Statistics

Total Number of Meetings/Classes	39569
Total Hour of Meetings/Classes	45441:59:12
Total Number of Participants	1411059

6.5 Month-wise Number of Classes, Total Class Hours and Participants

Table 10: Month-wise Zoom Usage Statistics

Year 1 Year	Number Of Classes	Total Class Hours	Total Participants
May, 2021	79420	102116	3215695
June, 2021	127770	166413	6441336
July, 2021	111348	149652	5378990
August, 2021	147295	202190	7435008
September, 2021	133279	179272	6365539

October, 2021	91010	116065	3653814
November, 2021	76633	101018	3153253
December, 2021	45716	57502	1796817
January, 2022	82937	98200	4826870
February, 2022	124860	155180	7793889
March, 2022	47594	61252	1863547
April, 2022	39569	45441	1411059

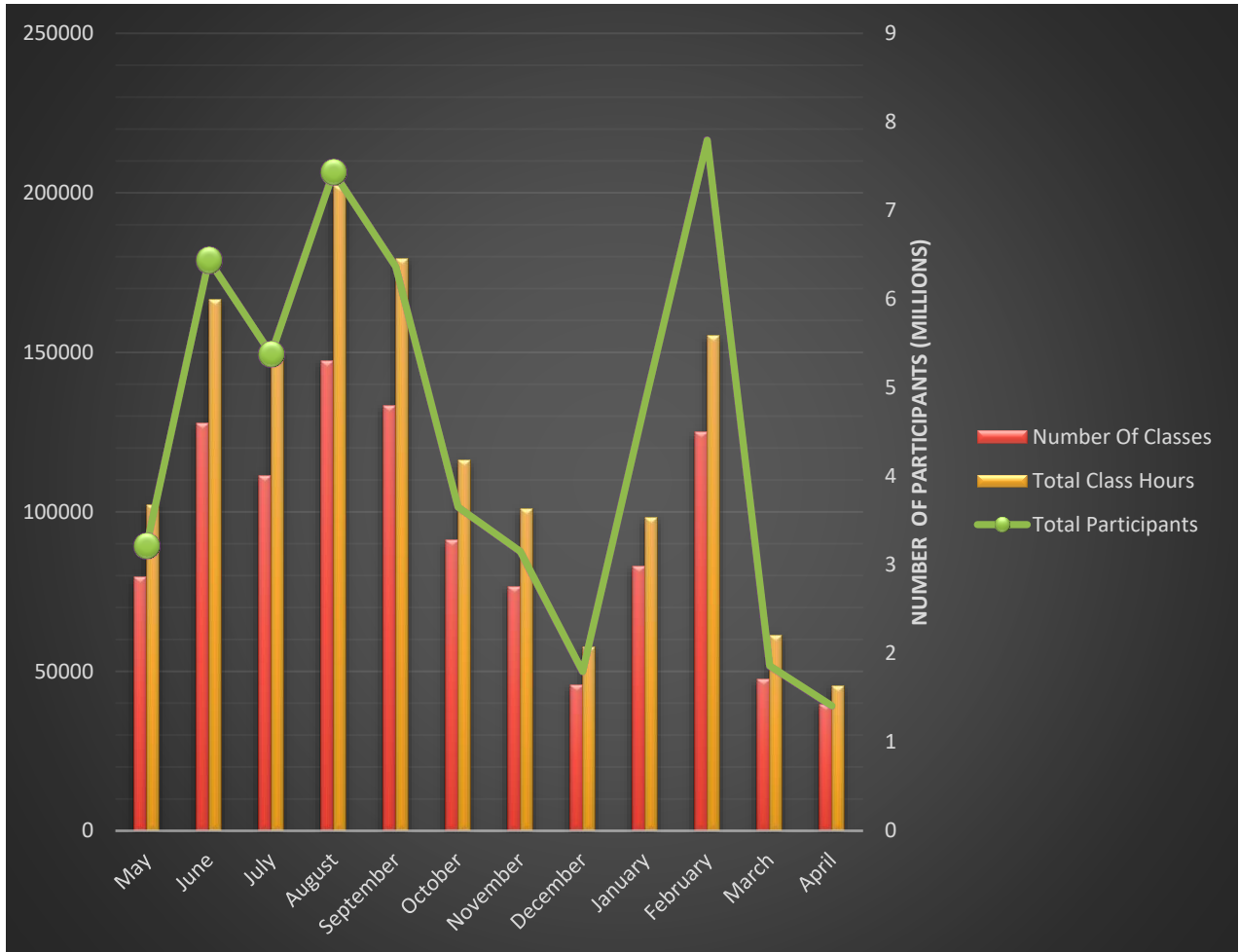


Figure 7: Month Wise Zoom Usage Graph in Last one year of 2021-2022

7. INSTITUTION WISE MAX HPC USAGE

Table 11: Institution Wise Max HPC Usage

Institutions	Used Space (GB)	Memory Size (GB)	CPUs
BAU	8648.22	468	104
BRAC	34.19	4	2
BRACU	342.38	12	4
BRUR	1024	24	8
BSMMU	1024	8	32
BSMRAAU	108.11	8	4
BSMRAU	6624	168	64
BU	3090	96	48
BUET	10037.11	17	11
BUP	10720.33	96	28
BUTEX	256	32	8
CEDP	1024	16	8
CU	266.22	16	8
CUET	1030	32	16
CVASU	12080	104	36
DU	38917.18	2181.96	598
DUET	3060	48	48
EWU	8060	64	32

Institutions	Used Space (GB)	Memory Size (GB)	CPUs
HSTU	1020	16	8
IAU	1024.22	24	12
IndU	1024	96	32
IU	2568.11	76	24
IRS	54.19	4	4
IUT	208.11	8	2
IUS	104.11	4	4
JNU	5102	128	40
JKKNIU	2030	32	12
JU	9384.22	104	52
JUST	4622.22	140	64
KU	309.11	40	28
KUET	132.23	32	20
MBSTU	8642.2	200	84
NITER	1010	8	4
NSU	232.23	32	16
PSTU	1020	16	8
PUST	1553.6	40	12
RUET	1368.22	22	14
SAU	2644.22	40	20
SUST	13272.55	184	46
UGC	1757.61	100	33

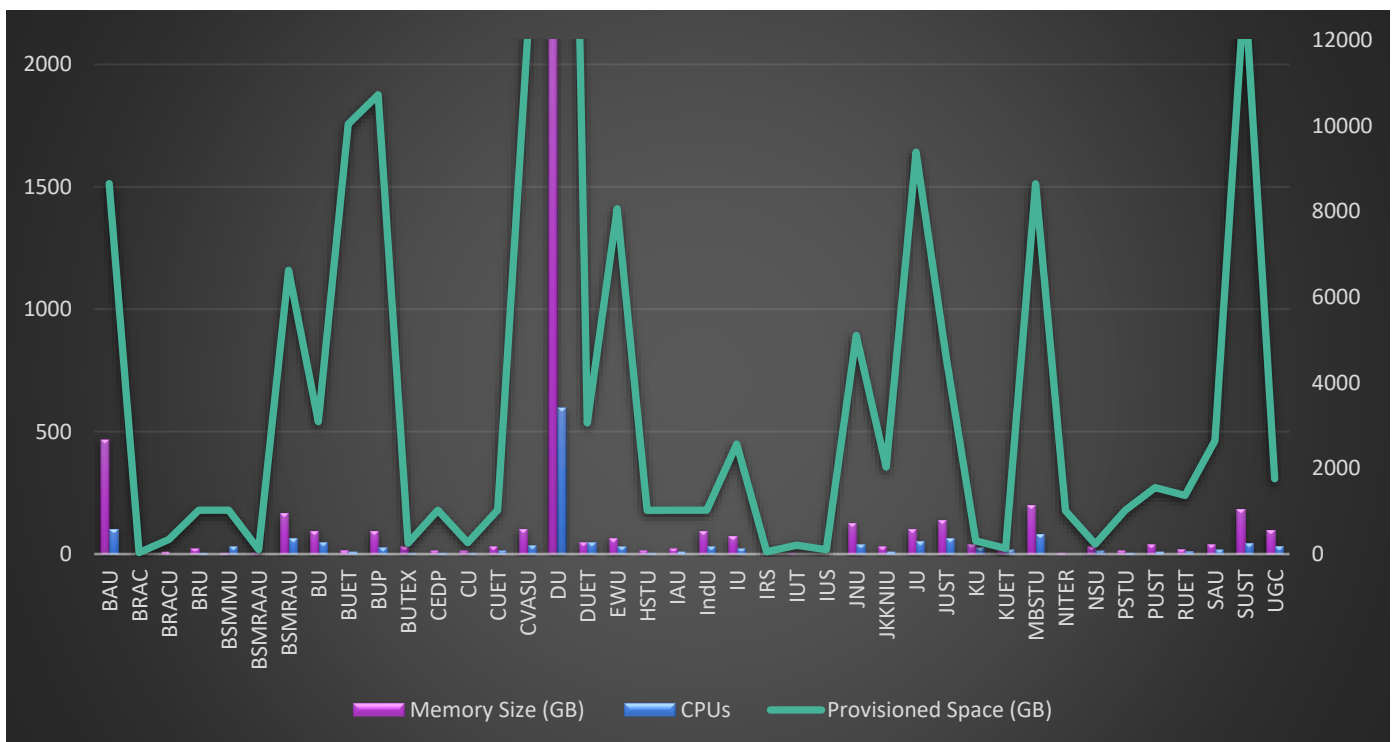


Figure 8: Institution Wise Max HPS Usage

8. ACRONYMS

AUB	Asian University of Bangladesh	JUST	Jessore University of Science & Technology
AUST	Ahsanullah University of Science & Technology	KU	Khulna University
AUW	Asian University for Women	KUET	Khulna University of Engineering & Technology
BARD	Bangladesh Academy for Rural Development	LUS	Leading University, Sylhet
BARI	Bangladesh Agricultural Research Institute	MBSTU	Mawlana Bhashani Science and Technology University
BAU	Bangladesh Agricultural University	MIU	Manarat International University
BDU	Bangabandhu Sheikh Mujibur Rahman Digital University	MMC	Mymensingh Medical College, Mymensingh
BdREN	Bangladesh Research and Education Network	NINMAS	National Institute of Nuclear Medicine & Allied Science
BFRI	Bangladesh Fisheries Research Institute	NITER	National Institute of Textile Engineering & Research
BIDS	The Bangladesh Institute of Development Studies	NKN	National Knowledge Network
BLRI	Bangladesh Livestock Research Institute	NOC	Network Operation Center
BOU	Banagladesh Open University	NREN	National Research and Education Network
BRACU	BRAC University	NSTU	Noakhali Science and Technology University
BRRI	Bangladesh Rice Research Institute	NSU	North South University
BRUR	Begum Rokeya University, Rangpur	NU	National University
BSMMU	Bangabandhu Sheikh Mujib Medical University	PSTU	Patuakhali Science and Technology University
BSMRAU	Bangabandhu Sheikh Mujibur Rahman Agricultural University	PUST	Pabna University of Science and Technology
BSMRSTU	Bangabandhu Sheikh Mujibur Rahman Science and Technology University	RAM	Random Access Memory
BTCL	Bangladesh Telecommunications Company Limited	RMC	Rajshahi Medical College, Rajshahi
BU	University of Barishal	RU	University of Rajshahi
BUBT	Bangladesh University of Business and Technology	RUET	Rajshahi University of Engineering & Technology
BUET	Bangladesh University of Engineering and Technology	SAU	Sylhet Agricultural University
BUP	Bangladesh University of Professionals	SBAU	Sher-e-Bangla Agricultural University
BUTEX	Bangladesh University of Textiles	SBMC	Sher-e-Bangla Medical College, Barishal
CMC	Chittagong Medical College, Chittagong	SOMC	Sylhet MAG Osmani Medical College, Sylhet
CoU	Cumilla University	SSHMC	Shaheed Suhrawardy Medical College, Dhaka
CU	University of Chittagong	SSKMC	Sheikh Sayera Khatun Medical College, Gopalganj
CUET	Chittagong University of Engineering and Technology	SSMC	Sir Salimullah Medical College, Dhaka
CVASU	Chattogram Veterinary and Animal Sciences University	SUST	Shahjalal University of Science and Technology
DDC	Dhaka Dental College, Dhaka	TB	Terabyte
DIU	Daffodil International University	UGC	University Grants Commission of Bangladesh
DMC	Dhaka Medical College, Dhaka	VU	Varendra University
DU	University of Dhaka		
DUET	Dhaka University of Engineering and Technology		
EU	Eastern University		
EWU	East West University		
HSTU	Hajee Mohammad Danesh Science & Technology University		
ICDDR'b	International Centre for Diarrhoeal Disease Research, Bangladesh		
ICMAB	The Institute of Cost and Management Accountants of Bangladesh		
ICSB	The Institute of Chartered Secretaries of Bangladesh		
IU	Islamic University, Bangladesh		
IUB	Independent University, Bangladesh		
IUBAT	International University of Business Agriculture and Technology		
IUT	Islamic University of Technology		
JKKNIU	Jatiya Kabi Kazi Nazrul Islam University		
JnU	Jagannath University		
JU	Jahangirnagar University		

